

Shenzhen GRILIGHT Technology Co.,Ltd

Tel: +8675527390189 Fax: +8675527397337

Web: www.grillite.com Contact: sale@grillight.com

PRODUCT SPECIFICATION

SILICONE NEON STRIP

OD25 360° NEON

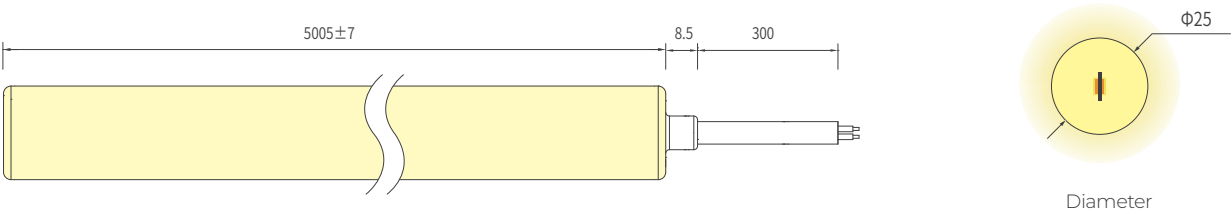
- 360° Lighting

OD 25



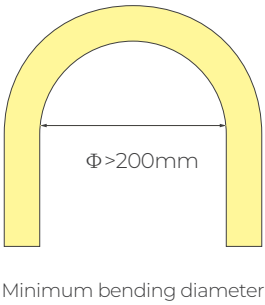
- Unique optical light distribution structure design, 360° emitting uniform without shadow.
- Integrated extrusion molding process, high light transmittance, environment-friendly silicone material.
- Excellent toughness, stylish appearance, elegant design
- Salt resistance, acid & alkali corrosion resistance, UV and fire resistance.
- Ambient temperature: -25°C~60°C; Storage temperature: 0°C~60°C.

Dimension structure (Unit: mm)



Electrical Parameter

Voltage	LED PIN Temperature	Storage Temperature	Ambient Temperature
DC24V	Max. 65 C	-25 C ~ 60 C	Min.-25°C Max(Table below)



Specification

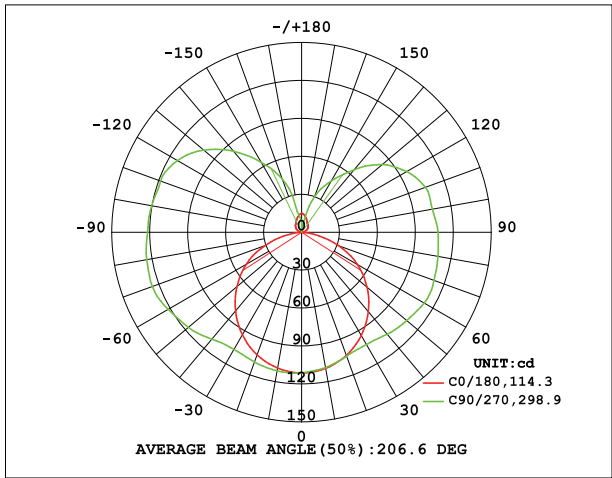
Power (w/m)	Efficacy (lm/w) @4000K	Max Ambient Temperature
5	59	55°C
10	55	45°C

Due to the tolerance of the production and electrical components, output value and electrical power can very up to 10%

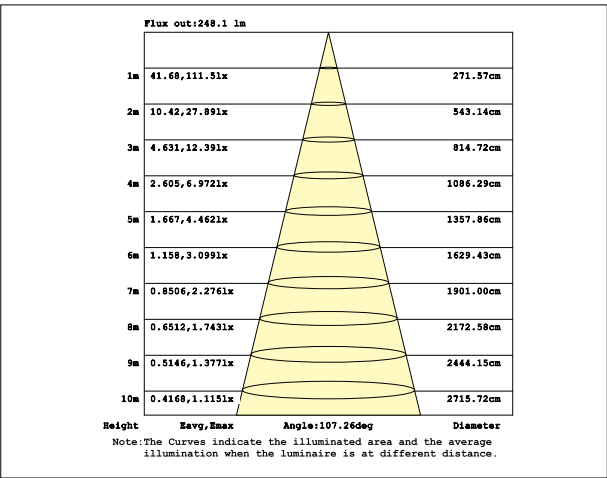
Length Standard

Length Range (M)	Final Length (mm)			Tolerance (mm)
	Integral end cap	Silicone end cap	Metal End Cap	
0<Neon Strip(L)≤5	L+5	L+5	L+9	±7

Light Distribution Curve



Illuminance curve



Note: The above data is based on 24V ,10W/M, single colour with 4000k colour temperature. If you need IES files for other types. Please contact our sales department.

Parameter Table

Resistant Saltwater

Resistant To Solvents

UV Protection

Warranty 5 Years

IK 10

Voltage 24v DC

- The maximum series length refers to the maximum length of the light strip with single-end power supply in series under the standard 30CM cable.
- The given color temperature is the temperature of finished product.
- The given data are typical values due to the tolerances of the production process and the electrical components, values for light output and electrical power can vary up to 10%.
- All products can be dimmed; the dimmer's voltage should conform to the rated voltage of the led light.
- The output frequency of the dimmer of the constant-current led light should be less than 2K Hz, and the output PWM can control the led light.

Single color

CCT(K)	Ra	Voltage	Power(W)	Lumen (LM/M)	Efficiency (LM/W)	Max Run Length (M)	CC/CV
2400±150	≥90	DC24V	5	272	56	5	CV
			10	530	53	5	CV
2700±150	≥90	DC24V	5	276	55	5	CV
			10	520	52	5	CV
3000±150	≥90	DC24V	5	284	27	5	CV
			10	530	53	5	CV
3500±200	≥90	DC24V	5	306	61	5	CV
			10	600	60	5	CV
4000 ⁺⁴⁰⁰ ₋₂₀₀	≥90	DC24V	5	298	59	5	CV
			10	550	55	5	CV
5000 ⁺⁵⁰⁰ ₋₃₀₀	≥90	DC24V	5	309	62	5	CV
			10	600	60	5	CV
6000±500	≥90	DC24V	5	302	60	5	CV
			10	580	58	5	CV
R: 620-630nm	--	DC24V	5	114	23	5	CV
			10	250	25	5	CV
G: 520-530nm	--	DC24V	5	289	58	5	CV
			10	500	50	5	CV
B: 465-475nm	--	DC24V	5	61	12	5	CV
			10	110	11	5	CV
Y: 585-595nm	--	DC24V	5	97	19	5	CV
			10	210	21	5	CV
Pink	--	DC24V	5	210	42	5	CV
			10	410	41	5	CV



- The maximum series length refers to the maximum length of the light strip with single-end power supply in series under the standard 30CM cable.
- The given color temperature is the temperature of finished product.
- The given data are typical values due to the tolerances of the production process and the electrical components, values for light output and electrical power can vary up to 10%.
- All products can be dimmed; the dimmer's voltage should conform to the rated voltage of the led light.
- The output frequency of the dimmer of the constant-current led light should be less than 2K Hz, and the output PWM can control the led light.

CCT Tunable : 5W

CCT(K)	Ra	Voltage	Power(W)	Lumen (LM/M)	Efficiency (LM/W)	Max. Run Length (M)	CC/CV
2700±150	≥90	DC24V	2.5	124	49	5	CV
6500±500	≥90	DC24V	2.5	127	50	5	CV
2700+6500	≥90	DC24V	5	250	50	5	CV

CCT Tunable : 10W

CCT(K)	Ra	Voltage	Power(W)	Lumen (LM/M)	Efficiency (LM/W)	Max. Run Length (M)	CC/CV
2700±150	≥90	DC24V	5	258	50	5	CV
6500±500	≥90	DC24V	5	262	50	5	CV
2700+6500	≥90	DC24V	10	517	50	5	CV

RGB : 5W

CCT(K)	Voltage	Power(W)	Lumen (LM/M)	Efficiency (LM/W)	Max. Run Length (M)	CC/CV
R: 620-630nm	DC24V	1.6	27	15	5	CV
G: 520-530nm	DC24V	1.6	98	57	5	CV
B: 465-475nm	DC24V	1.6	16	9	5	CV
RGB	DC24V	5	144	29	5	CV

RGB : 10W

CCT(K)	Voltage	Power(W)	Lumen (LM/M)	Efficiency (LM/W)	Max. Run Length (M)	CC/CV
R: 620-630nm	DC24V	3.3	56	16	5	CV
G: 520-530nm	DC24V	3.3	162	47	5	CV
B: 465-475nm	DC24V	3.3	26	7	5	CV
RGB	DC24V	10	248	24	5	CV

RGBW

CCT(K)	Ra	Voltage	Power(W)	Lumen (LM/M)	Efficiency (LM/W)	Max. Run Length (M)	CC/CV
R: 620-630nm	--	DC24V	4	58	15	5	CV
G: 520-530nm	--	DC24V	4	194	49	5	CV
B: 465-475nm	--	DC24V	4	32	8	5	CV
W: 2200±100	≥90	DC24V	4	200	50	5	CV
RGBW	--	DC24V	16	281	23	5	CV



- The maximum series length refers to the maximum length of the light strip with single-end power supply in series under the standard 30CM cable.
- The given color temperature is the temperature of finished product.
- The given data are typical values due to the tolerances of the production process and the electrical components, values for light output and electrical power can vary up to 10%.
- All products can be dimmed; the dimmer's voltage should conform to the rated voltage of the led light.
- The output frequency of the dimmer of the constant-current led light should be less than 2K Hz, and the output PWM can control the led light.

CCT(K)	Ra	Voltage	Power(W)	Lumen (LM/M)	Efficiency (LM/W)	Max. Run Length (M)	CC/CV
R: 620-630nm	--	DC24V	4	58	15	5	CV
G: 520-530nm	--	DC24V	4	194	49	5	CV
B: 465-475nm	--	DC24V	4	32	8	5	CV
W: 2700±100	≥90	DC24V	4	219	55	5	CV
RGBW	--	DC24V	16	281	23	5	CV

CCT(K)	Ra	Voltage	Power(W)	Lumen (LM/M)	Efficiency (LM/W)	Max. Run Length (M)	CC/CV
R: 620-630nm	--	DC24V	4	58	15	5	CV
G: 520-530nm	--	DC24V	4	194	49	5	CV
B: 465-475nm	--	DC24V	4	32	8	5	CV
W: 3200±200	≥90	DC24V	4	224	56	5	CV
RGBW	--	DC24V	16	281	23	5	CV

CCT(K)	Ra	Voltage	Power(W)	Lumen (LM/M)	Efficiency (LM/W)	Max. Run Length (M)	CC/CV
R: 620-630nm	--	DC24V	4	58	15	5	CV
G: 520-530nm	--	DC24V	4	194	49	5	CV
B: 465-475nm	--	DC24V	4	32	8	5	CV
W: 4500±300	≥90	DC24V	4	226	56	5	CV
RGBW	--	DC24V	16	281	23	5	CV

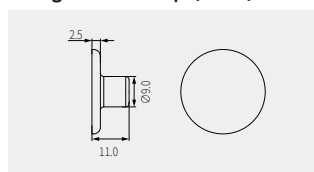
CCT(K)	Ra	Voltage	Power(W)	Lumen (LM/M)	Efficiency (LM/W)	Max. Run Length (M)	CC/CV
R: 620-630nm	--	DC24V	4	58	15	5	CV
G: 520-530nm	--	DC24V	4	194	49	5	CV
B: 465-475nm	--	DC24V	4	32	8	5	CV
W: 5500±300	≥90	DC24V	4	237	59	5	CV
RGBW	--	DC24V	16	281	23	5	CV



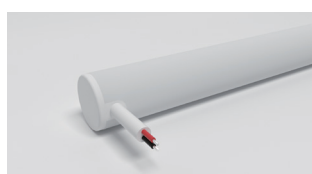
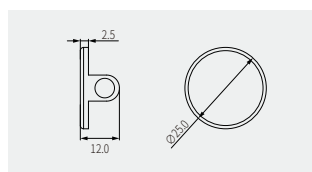
CCT(K)	Ra	Voltage	Power(W)	Lumen (LM/M)	Efficiency (LM/W)	Max. Run Length (M)	CC/CV
R: 620-630nm	--	DC24V	4	58	15	5	CV
G: 520-530nm	--	DC24V	4	194	49	5	CV
B: 465-475nm	--	DC24V	4	32	8	5	CV
W: 6500±500	≥90	DC24V	4	229	57	5	CV
RGBW	--	DC24V	16	281	23	5	CV

Cable Lead Option (Unit: mm)

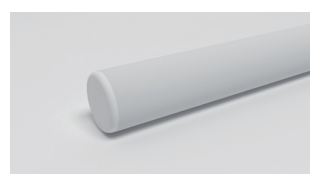
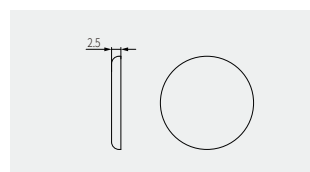
Integral End Cap (IP67)



Front Cable Entry

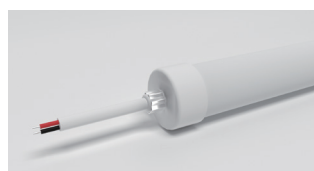
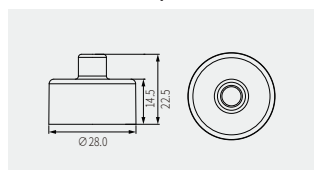


Side Cable Entry

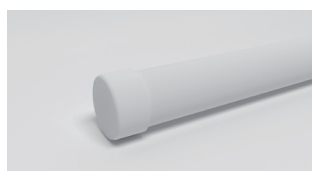
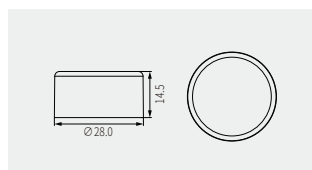


Closed End cap

Silicone end cap (IP65)

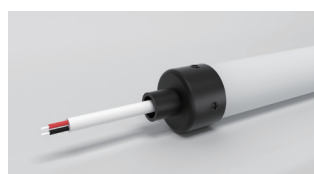
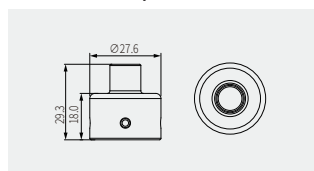


Front Cable Entry

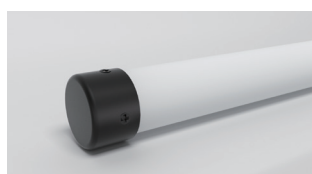
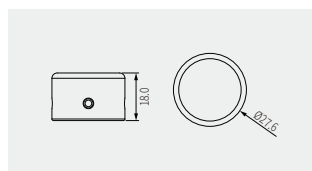


Closed End cap

Metal End Cap(IP65) The metal guard coil is unavailable if fitted the metal end cap















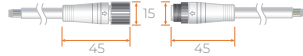



Front Cable Entry



Closed End cap

Cable

Cable Type	Schematic Diagram	Specification	Core	Electrical Properties
Silicone Cable		OD: 6.0mm / Inner core: 20AWG		Red V+, Black V-
		OD: 6.0mm / Inner core: 20AWG		Black V+, White W, Yellow WW
		OD: 6.0mm / Inner core: 20AWG		Black V+, Blue B, Green G, Red R
		OD: 6.4mm / Inner core: Red/Black--20AWG Green/Blue/White--22AWG		Black V+, White W, Blue B, Green G, Red R
Waterproof Connector with Silicone Cable		OD: 6.0mm / Inner core: 20AWG M12Male / Female connecto		Red V+, Black V-
		OD: 6.0mm / Inner core: 20AWG M12Male / Female connecto		Black V+, White W, Yellow WW
		OD: 6.0mm / Inner core: 20AWG M12Male / Female connecto		Black V+, Blue B, Green G, Red R
		OD: 6.4mm / Inner core: Red/Black--20AWG Green/Blue/White--22AWG M12Male / Female connecto		Black V+, White W, Blue B, Green G, Red R

Product accessories



-Name: R25 - Surface mounting with open PC clips
 -Model: R25-IA01
 -Attachment: Transparent PC mounting clips, Tapping screws, Expandable rubber plugs



-Name: R25 - Surface mounting with PC profile
 -Model: R25-IA02
 -Attachment: Transparent PC mounting profile, Tapping screws, Expandable rubber plugs
Note: Using Transparent PC mounting profile will cause the neon body to compress and stretch, resulting in a dark area at the tail!



-Name: R25 - "—" type hanging mounting with open PC clips
 -Model: R25-IA03
 -Attachment: Transparent PC mounting clips, Kit of hanging rope, Screws



-Name: R25 - "—" type hanging mounting with PC profile
 -Model: R25-IA04
 -Attachment: Transparent PC mounting profile, Kit of hanging rope, Screws
Note: Using Transparent PC mounting profile will cause the neon body to compress and stretch, resulting in a dark area at the tail!



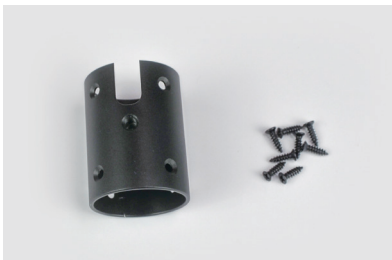
-Name: R25 - "I" type hanging mounting
 -Model: R25-IA05
 -Attachment: Kit of "I" type hanging mounting, Tapping screws, Expandable rubber plugs



-Name: R25 - "U" type hanging mounting
 -Model: R25-IA06
 -Attachment: Kit of "I" type hanging mounting, Tapping screws, Expandable rubber plugs



-Name: R25 - "I" type hanging mounting with rope
 -Model: R25-IA07
 -Attachment: Kit of "I" type hanging mounting with rope, Tapping screws, Expandable rubber plugs



-Name: R25 - Connector with side outlet
 -Model: R25-IA08
 -Attachment: Metal connector with side outlet, Tapping screws



-Name: R25 - Connector
 -Model: R25-IA09
 -Attachment: Metal connector, Tapping screws

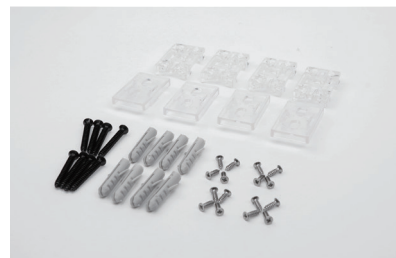
Product accessories



-Name: R25 - Surface mounting with closed PC clips
 -Model: R25-IA10
 -Attachment: "Ω" type transparent PC clips, Transparent PC pedestals with one hole, Tapping screws, Expandable rubber plugs



-Name: R25 - " type hanging mounting with closed PC clips
 -Model: R25-IA11
 -Attachment: "Ω" type transparent PC clips, Transparent PC pedestals with one hole, Kit of hanging rope, Machine screws



-Name: R25 - Surface mounting with concealed PC clips
 -Model: R25-IA12
 -Attachment: Transparent PC pedestals with two holes, Transparent PC pedestals with five holes, Tapping screws, Tapping screws, Expandable rubber plugs



-Name: R25 - " type hanging mounting with concealed PC clips
 -Model: R25-IA13
 -Attachment: Transparent PC pedestals with five holes, Tapping screws, Kit of hanging rope, Machine screws



-Name: R25 - " type adjustable hanging mounting with open PC clips
 -Model: R25-IA14
 -Attachment: Transparent PC mounting clips, Machine screws, Kit of telescopic rod



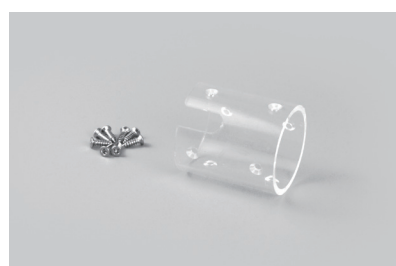
-Name: R25 - " type adjustable hanging mounting with PC profile
 -Model: R25-IA15
 -Attachment: Transparent PC mounting profile, Machine screws, Kit of telescopic rod
Note: Using Transparent PC mounting profile will cause the neon body to compress and stretch, resulting in a dark area at the tail!



-Name: R25 - " type adjustable hanging mounting with closed PC clips
 -Model: R25-IA16
 -Attachment: "Ω" type transparent PC clips, Transparent PC pedestals with one hole, Kit of telescopic rod



-Name: R25 - " type adjustable hanging mounting with concealed PC clips
 -Model: R25-IA17
 -Attachment: Transparent PC pedestals with five holes, Tapping screws, Kit of telescopic rod, Machine screws



-Name: R25 side outlet transparent connector
 -Model: R25-IA18
 -Attachment: Screws, PMMA transparent side outlet connector

Product accessories



-Name: R25 side outlet transparent connector with lifting rope
 -Model: R25-IA19
 -Attachment: Screws, Kit of hanging rope, Expandable rubber plugs, Tapping screws, PMMA transparent side outlet connector;



-Name: R25 transparent connector
 -Model: R25-IA20
 -Attachment: Screws, PMMA transparent connector;



-Name: R25 transparent connector with lifting rope
 -Model: R25-IA21
 -Attachment: Screws, Kit of hanging rope, Expandable rubber plugs, Tapping screws, PMMA transparent connector;

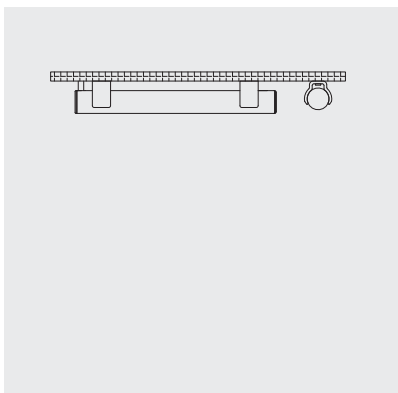


-Name: R25-Horizontal hanging circular tube 1M
 -Model: R25-IA22
 -Attachment: Screws, Kit of hanging rope, Expandable rubber plugs, Tapping screws, PMMA transparent circular tube;

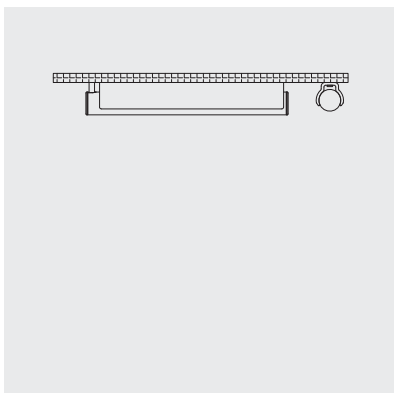


-Name: R25-Horizontal hanging circular tube 2M
 -Model: R25-IA23
 -Attachment: Screws, Kit of hanging rope, Expandable rubber plugs, Tapping screws, PMMA transparent circular tube;

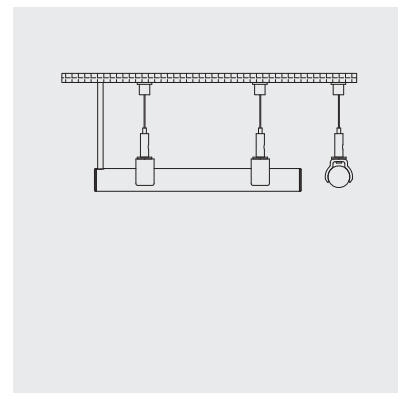
Installation method



R25 - Surface mounting with open PC clips (R25-IA01)

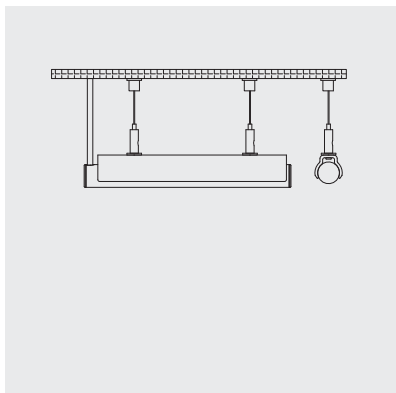


R25 - Surface mounting with PC profile (R25-IA02)

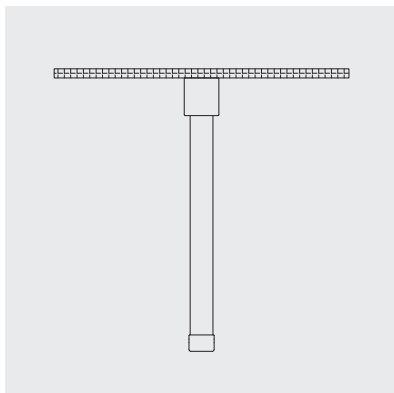


R25 - “—” type hanging mounting with open PC clips (R25-IA03)

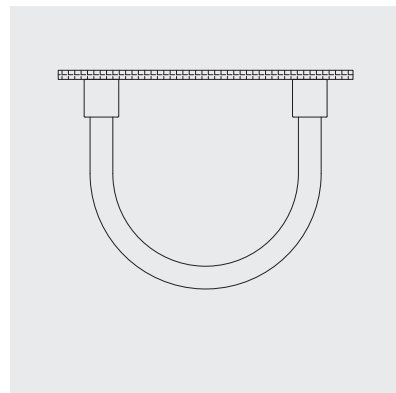
Installation method



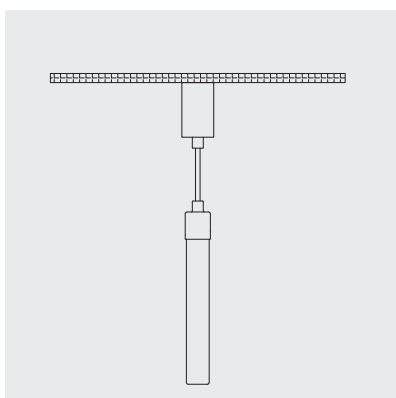
R25 - “—” type hanging mounting with PC profile (R25-IA04)



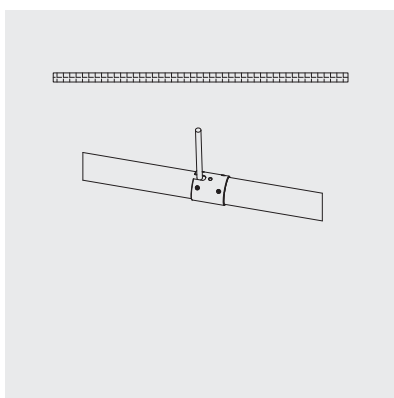
R25 - “I” type hanging mounting (R25-IA05)



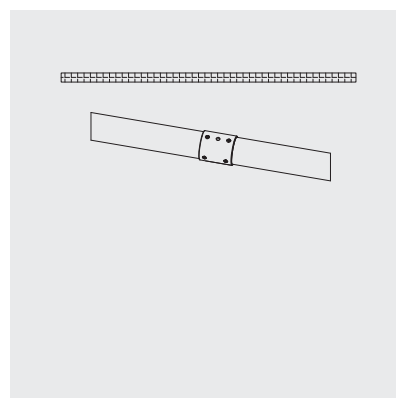
R25 - “U” type hanging mounting (R25-IA06)



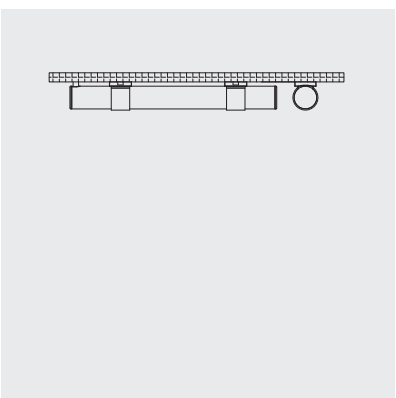
R25 - “I” type hanging mounting with rope (R25-IA07)



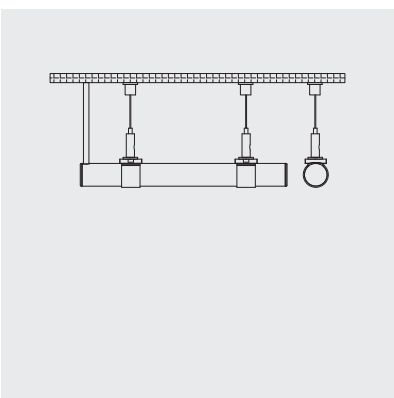
R25 - Connector with side outlet (R25-IA08)



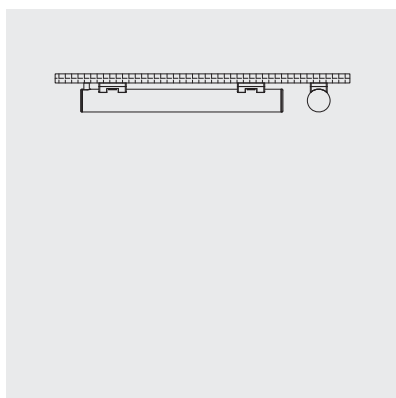
R25 - Connector (R25-IA09)



R25 - Surface mounting with closed PC clips (R25-IA10)

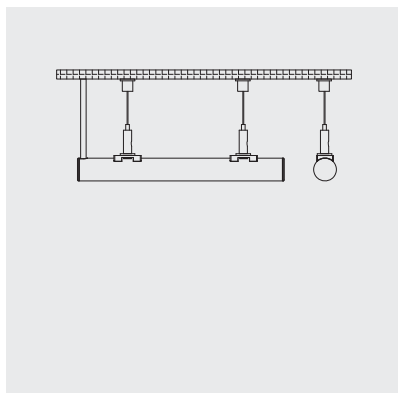


R25 - “—” type hanging mounting with closed PC clips (R25-IA11)

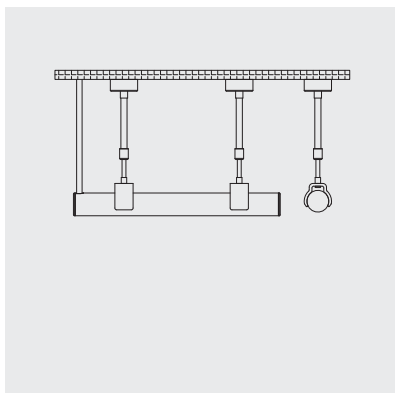


R25 - Surface mounting with concealed PC clips (R25-IA12)

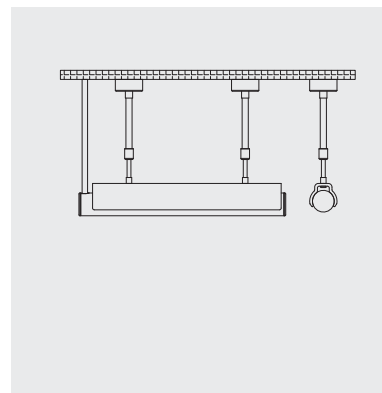
Installation method



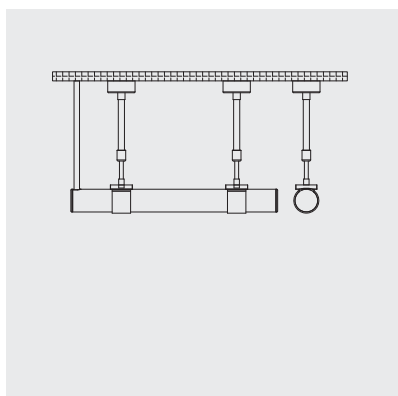
R25 - “—” type hanging mounting with concealed PC clips(R25-IA13)



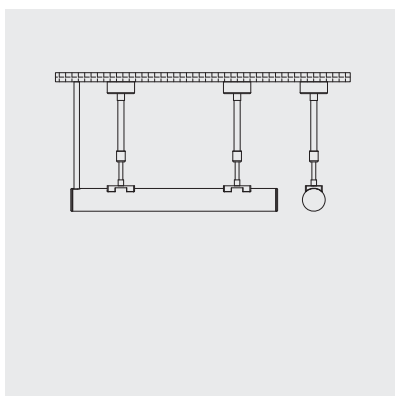
R25 - “—” type adjustable hanging mounting with open PC clips (R25-IA14)



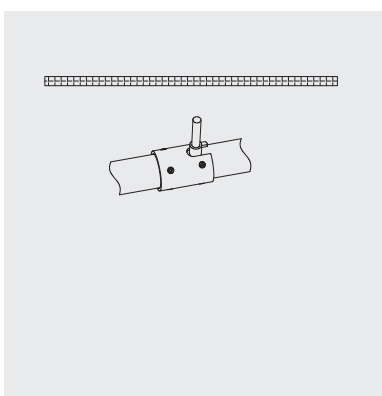
R25 - “—” type adjustable hanging mounting with PC profile (R25-IA15)



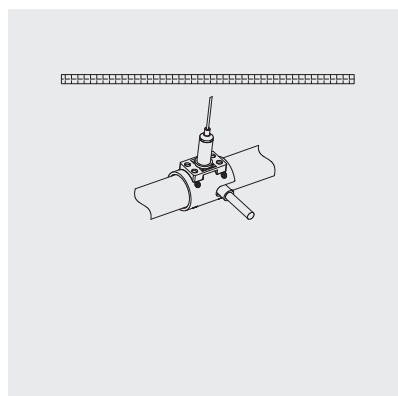
R25 - “—” type adjustable hanging mounting with closed PC clips (R25-IA16)



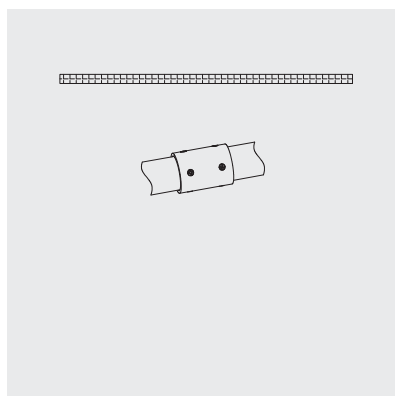
R25 - “—” type adjustable hanging mounting with concealed PC clips (R25-IA17)



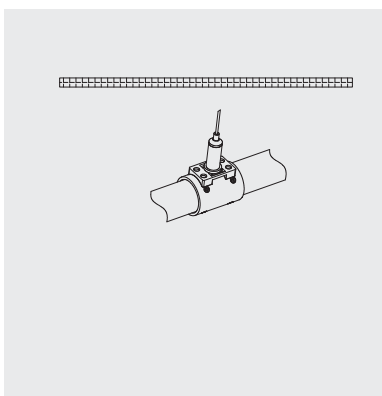
R25-Side outlet transparent connector (R25-IA18)



R25-side outlet transparent connector with lifting rope (R25-IA19)

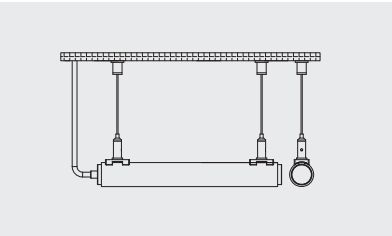


R25 transparent connector (R25-IA20)

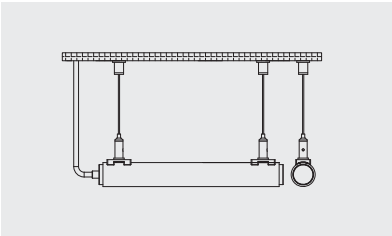


R25 transparent connector with lifting rope (R25-IA21)

Installation method

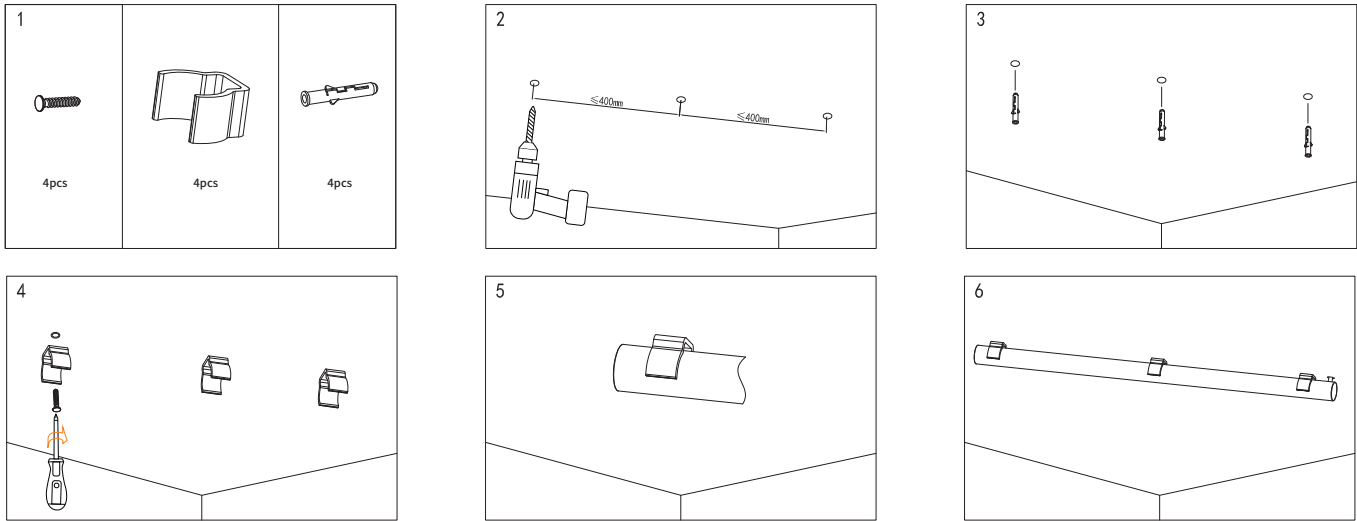


R25-Horizontal hanging circular tube 1M (R25-IA22)

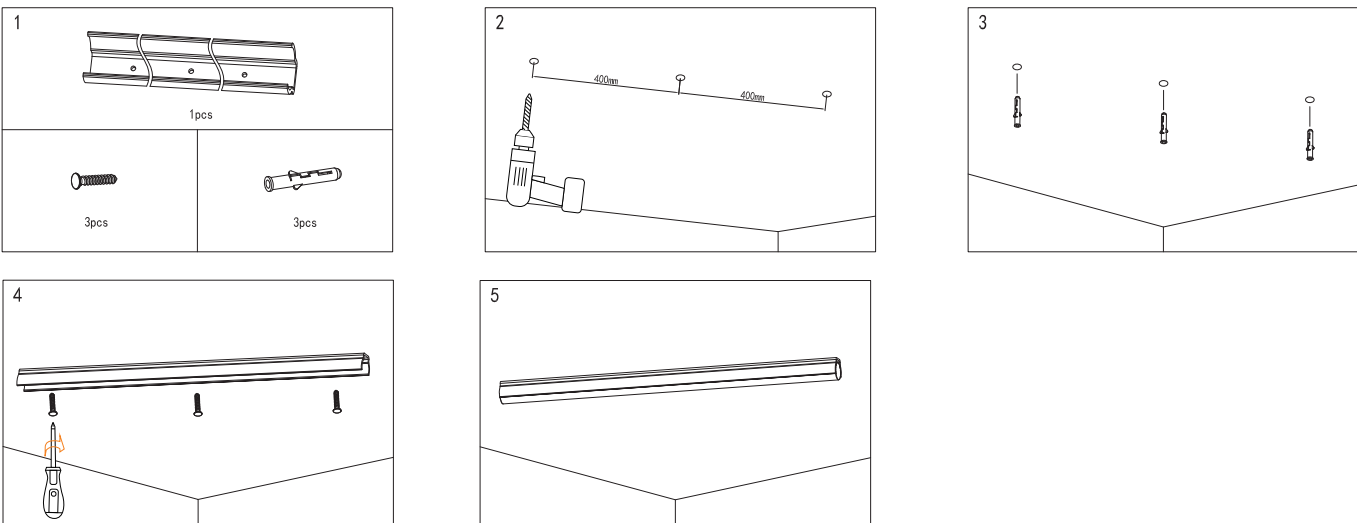


R25-Horizontal hanging circular tube 2M (R25-IA23)

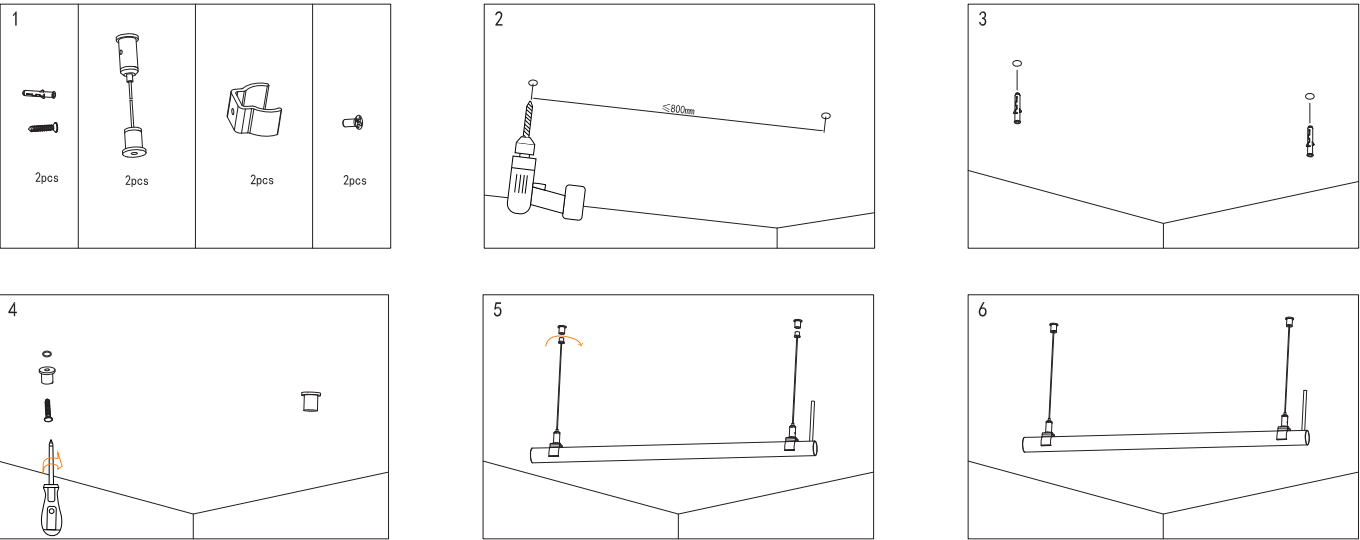
R25 - Surface mounting with open PC clips(R25-IA01)



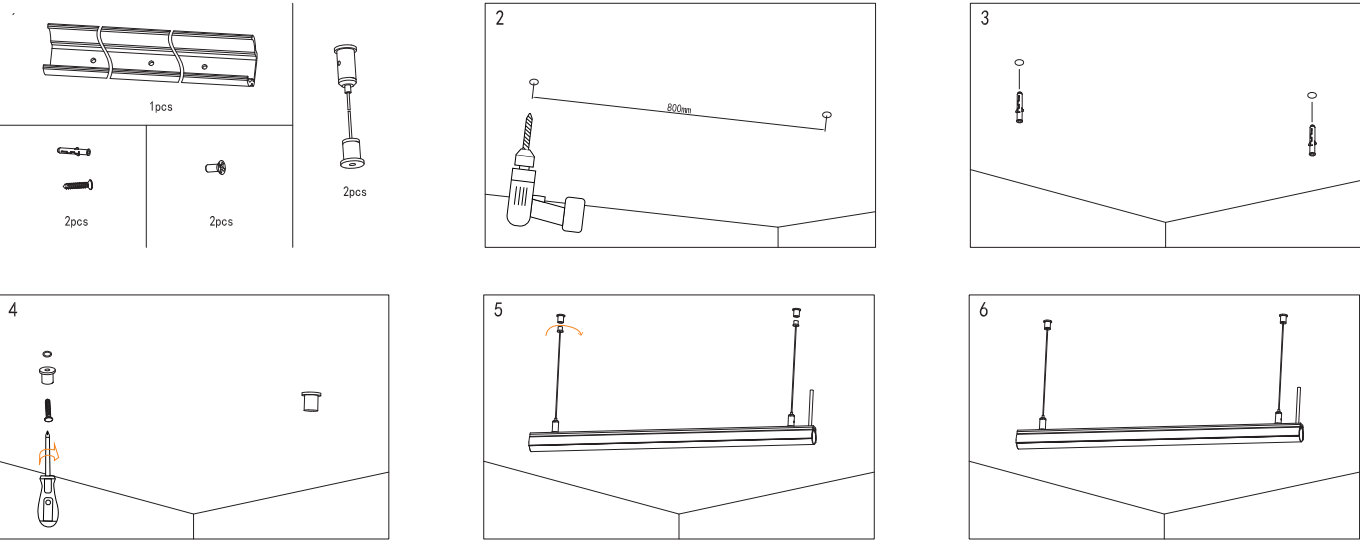
R25 - Surface mounting with PC profile(R25-IA02)



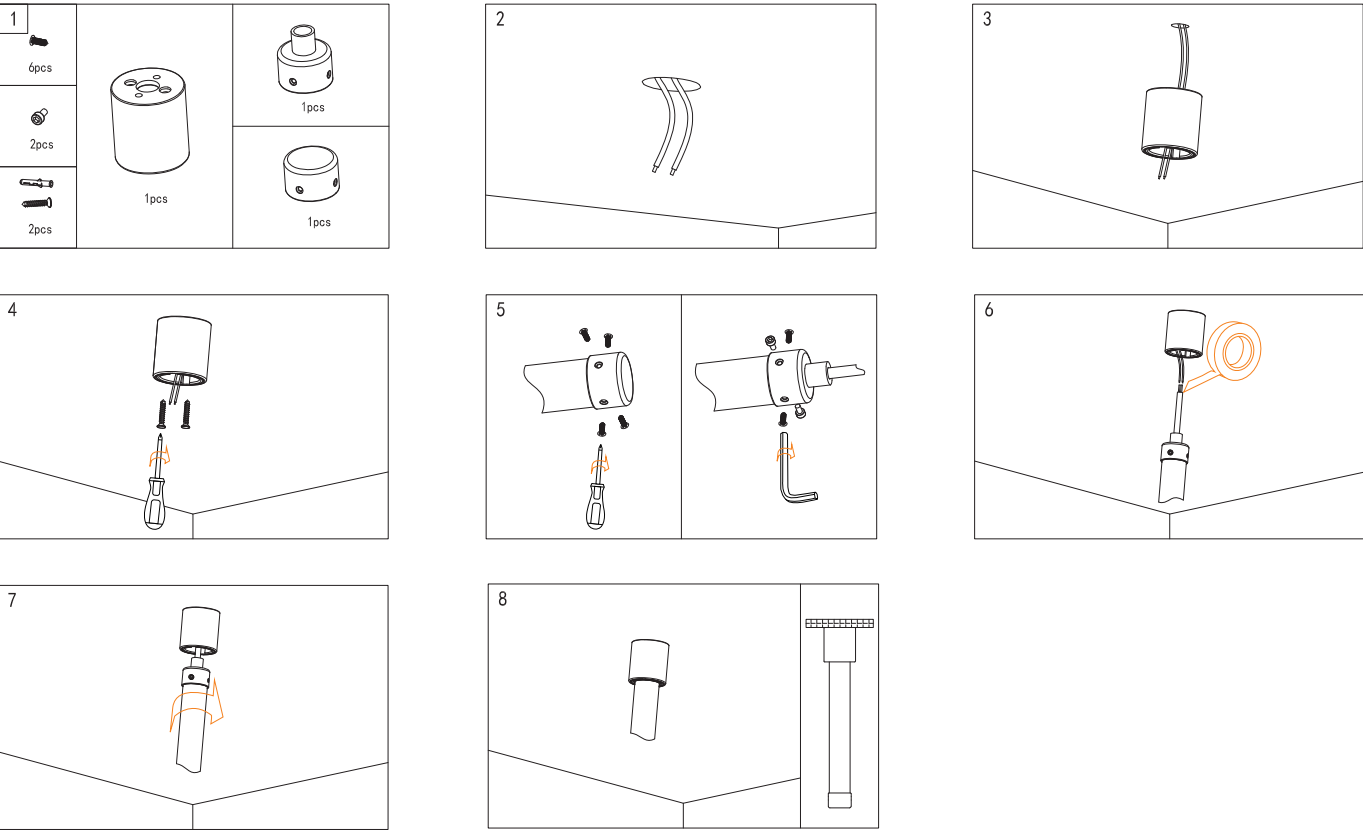
R25 - “—” type hanging mounting with open PC clips(R25-IA03)



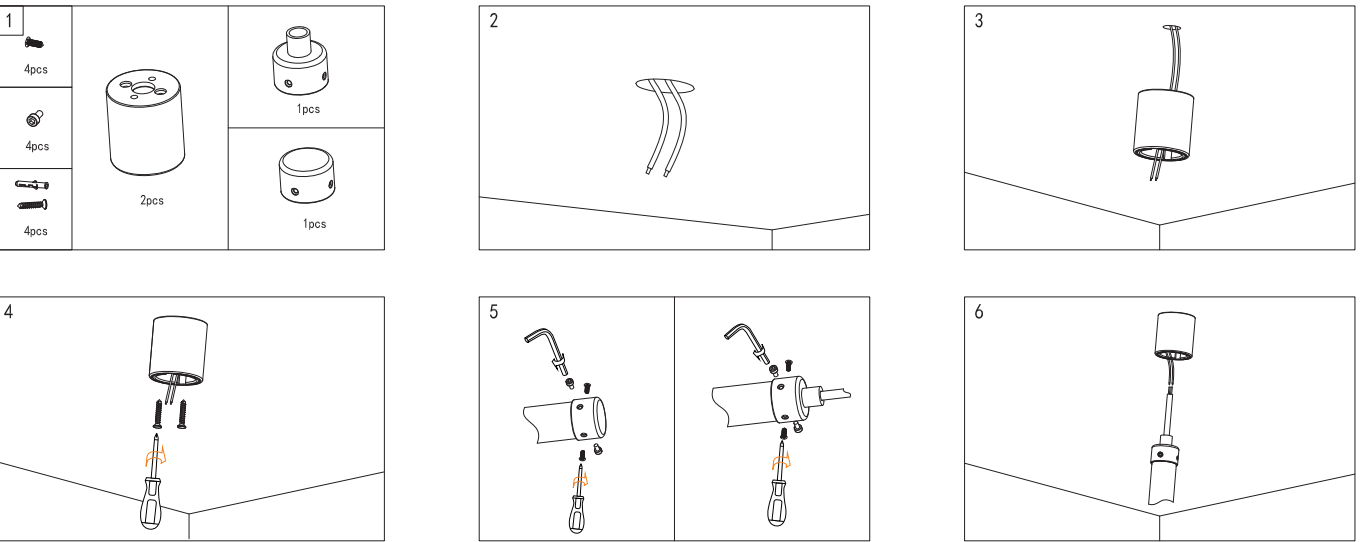
R25 - “—” type hanging mounting with PC profile(R25-IA04)

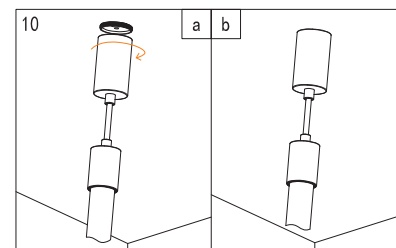
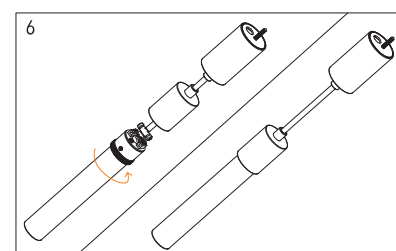
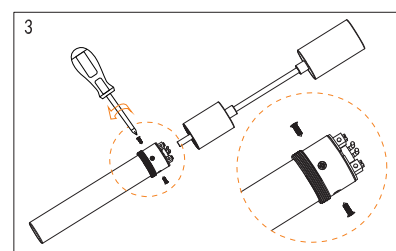
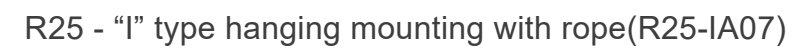
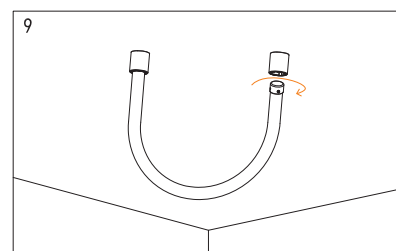


R25 - “I” type hanging mounting(R25-IA05)

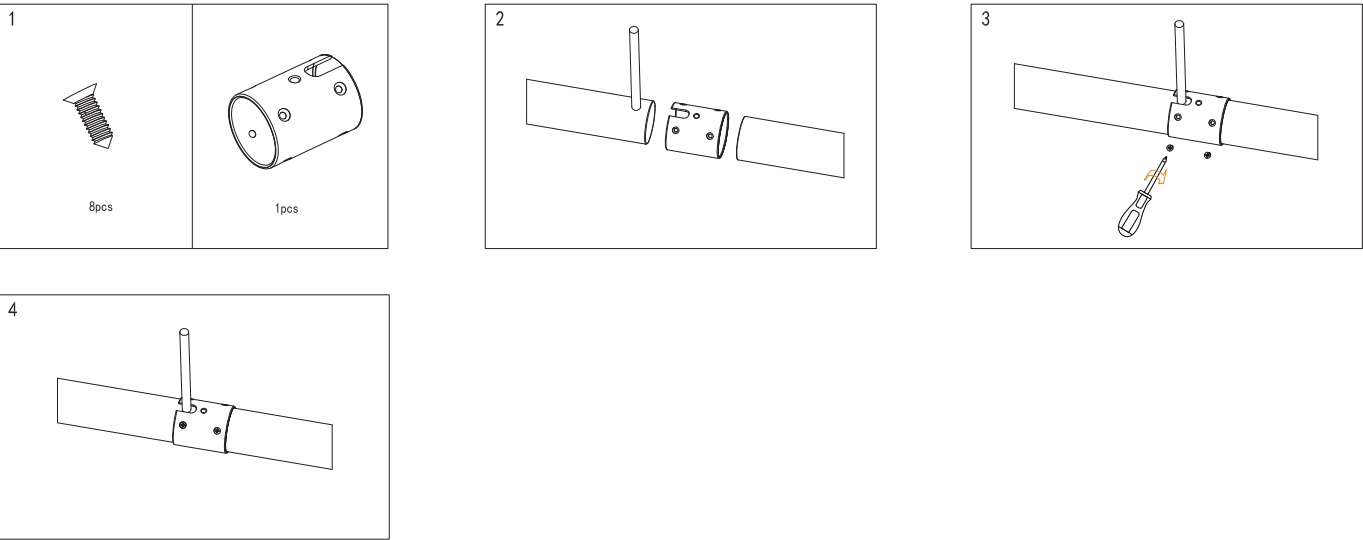


R25 - “U” type hanging mounting(R25-IA06)

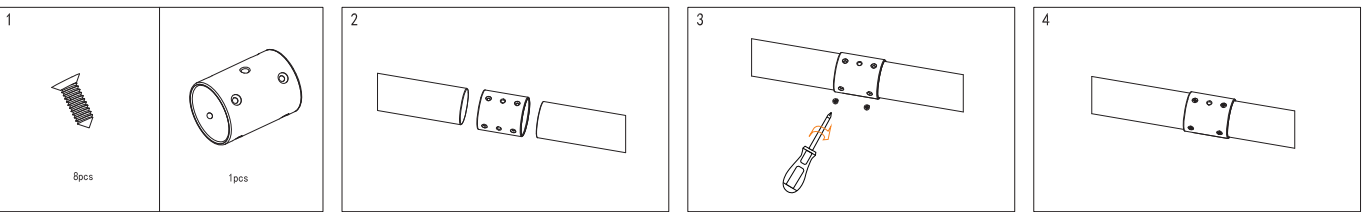




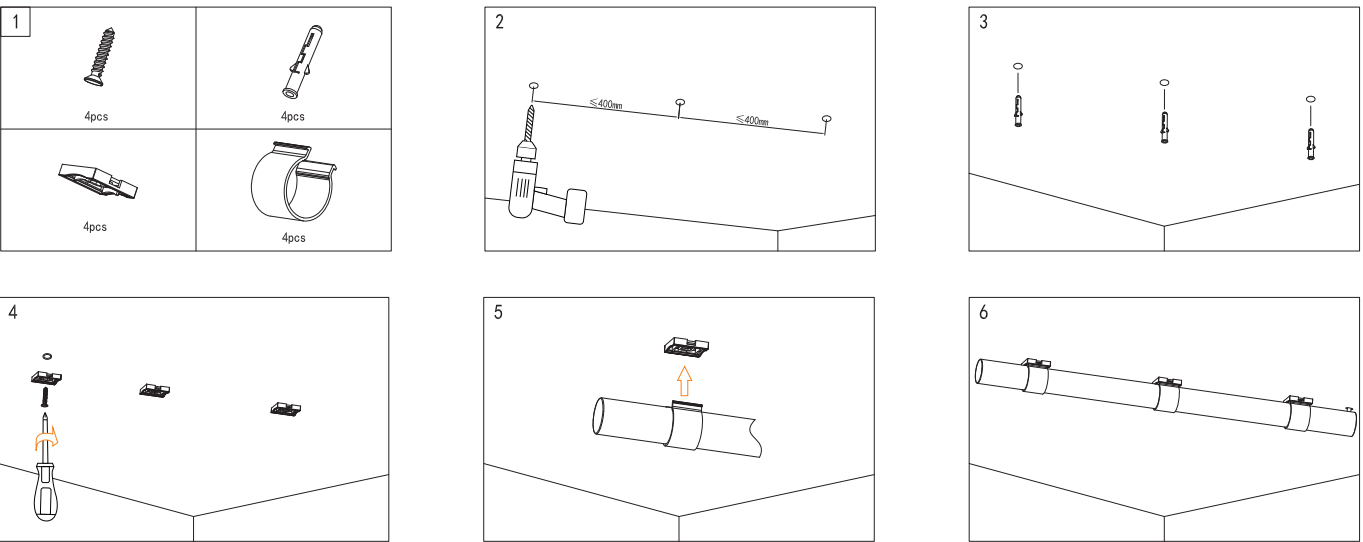
R25 - Connector with side outlet(R25-IA08)



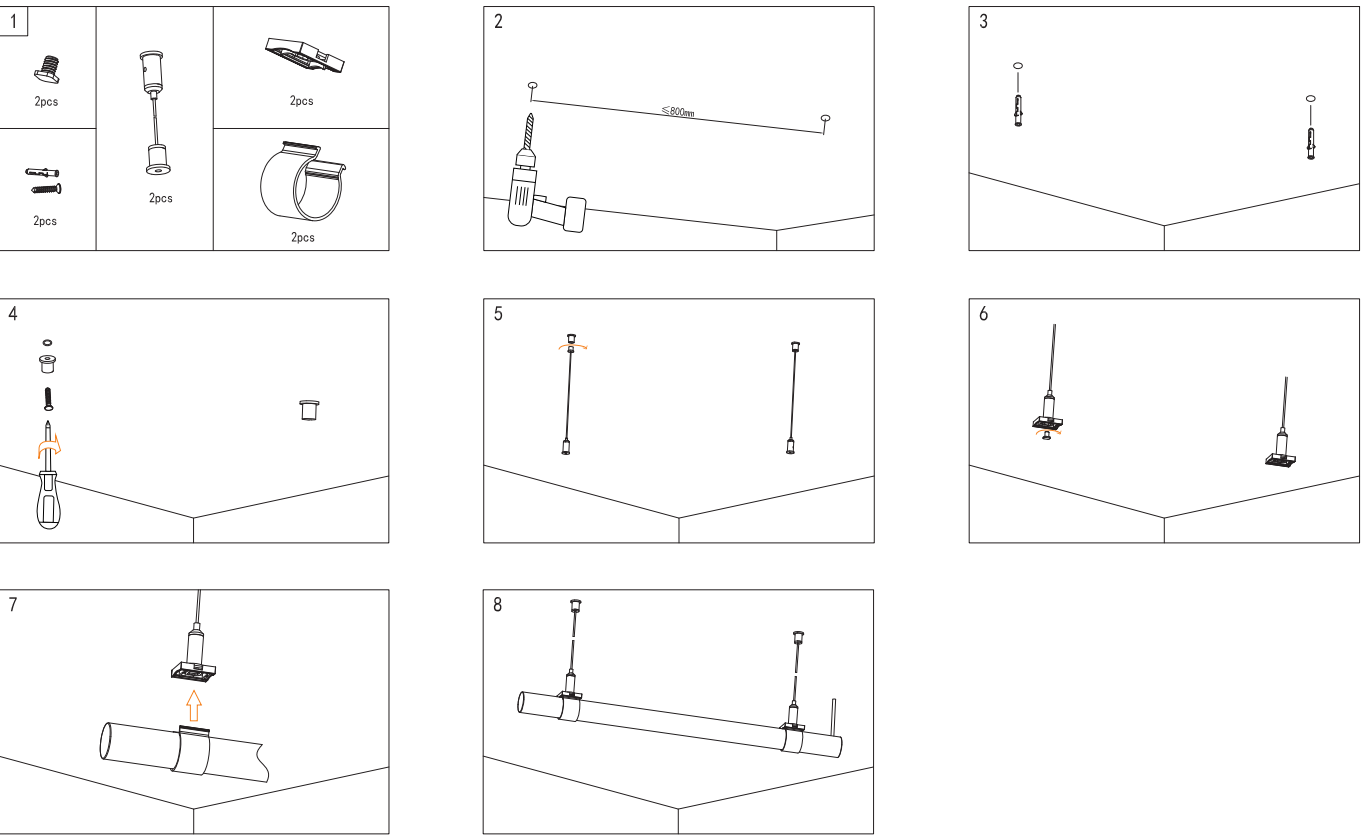
R25 - Connector(R25-IA09)



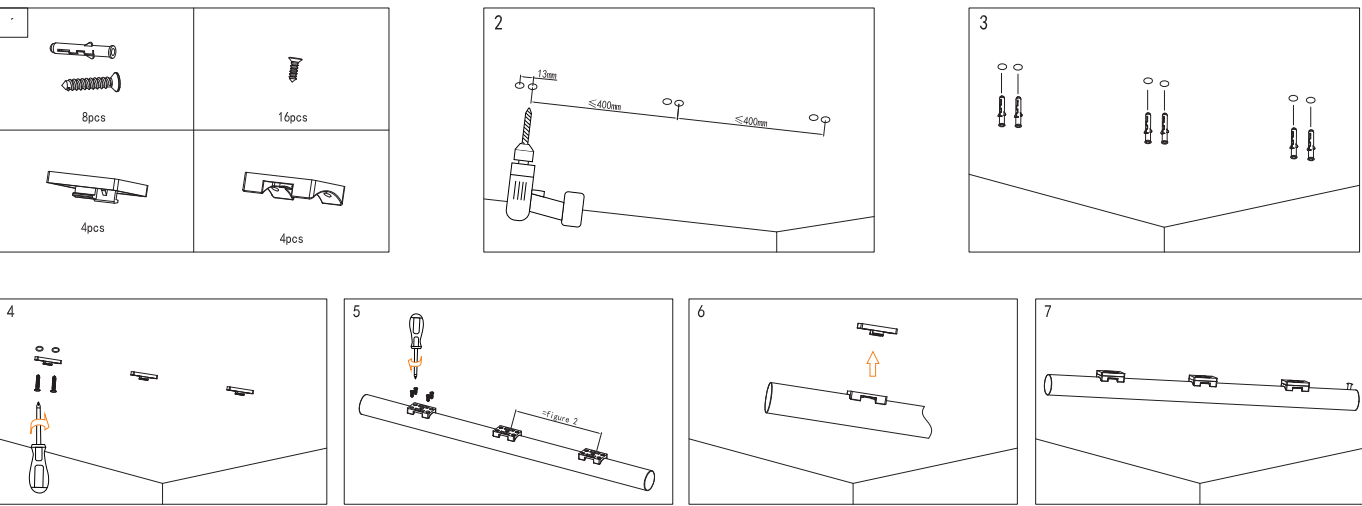
R25 - Surface mounting with closed PC clips(R25-IA10)



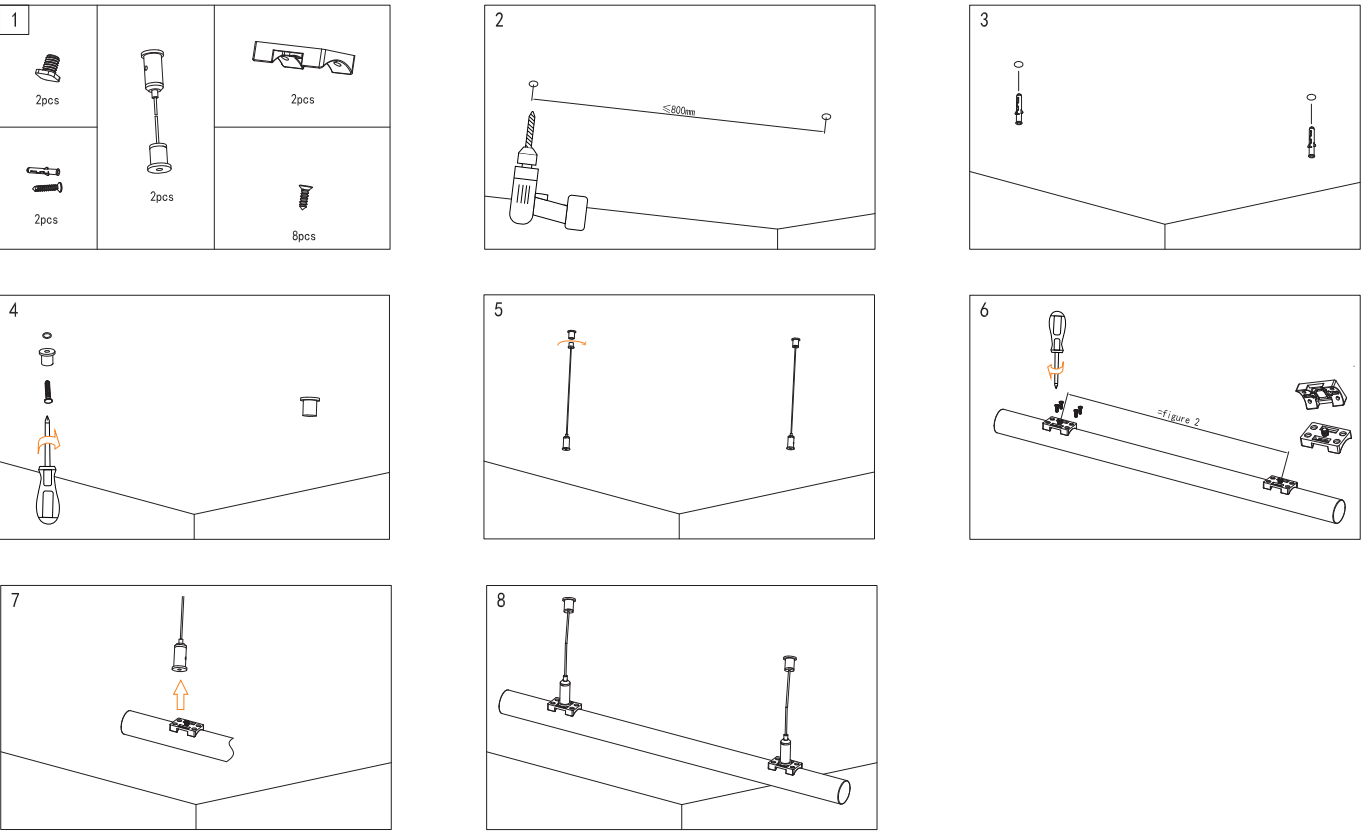
R25 - “—” type hanging mounting with closed PC clips(R25-IA11)



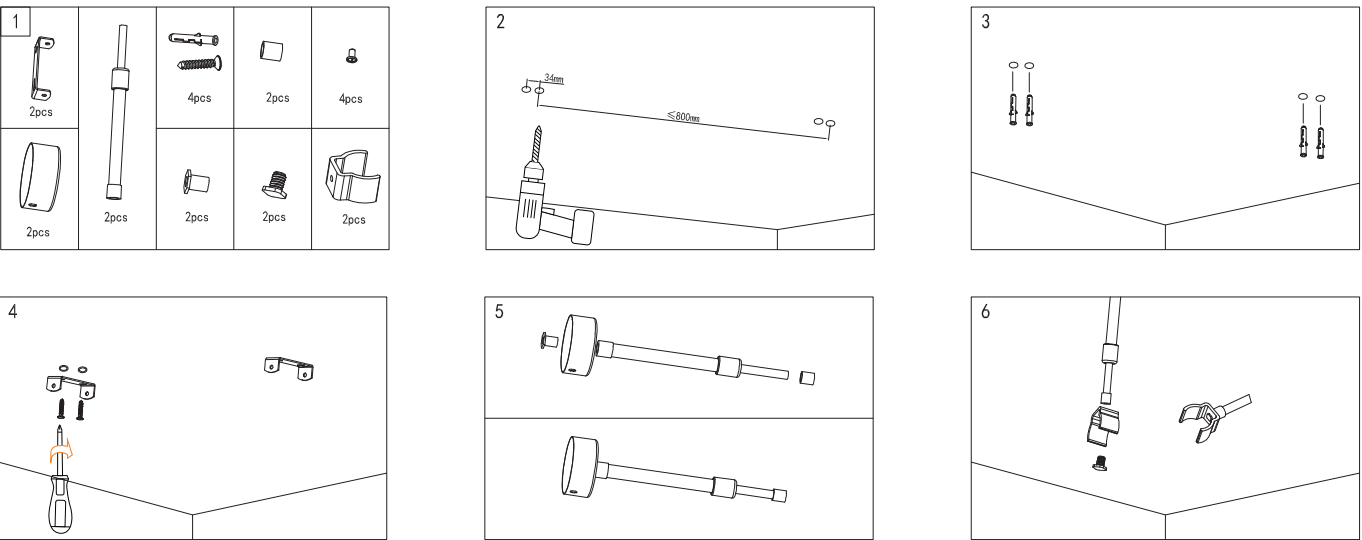
R25 - Surface mounting with concealed PC clips(R25-IA12)



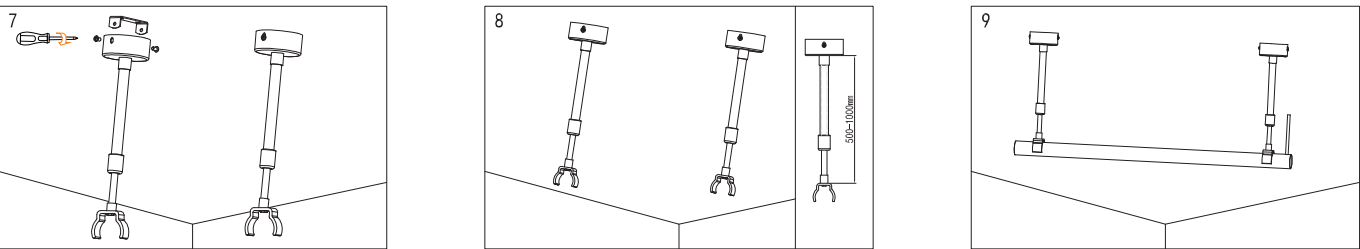
R25 - “—” type hanging mounting with concealed PC clips(R25-IA13)



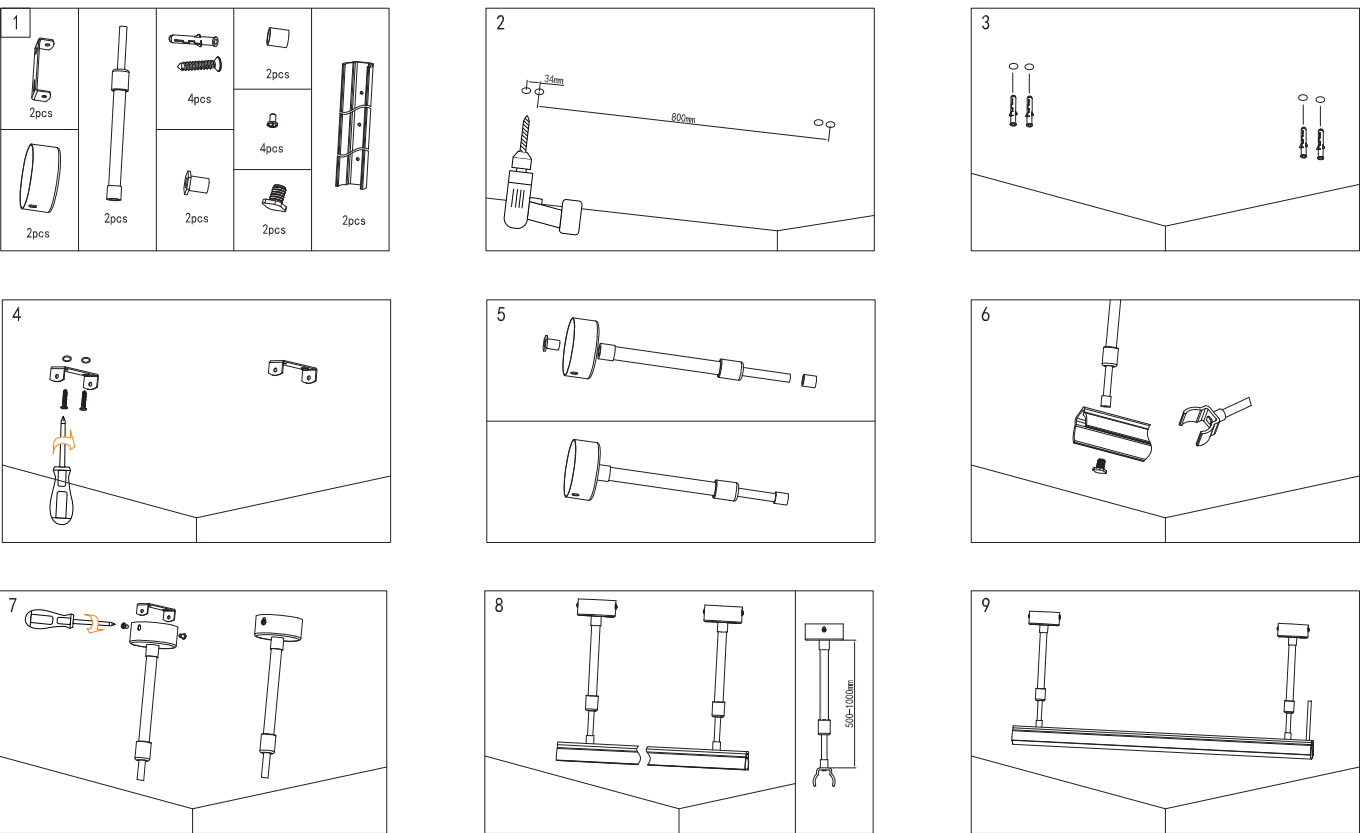
R25 - “—” type adjustable hanging mounting with open PC clips(R25-IA14)



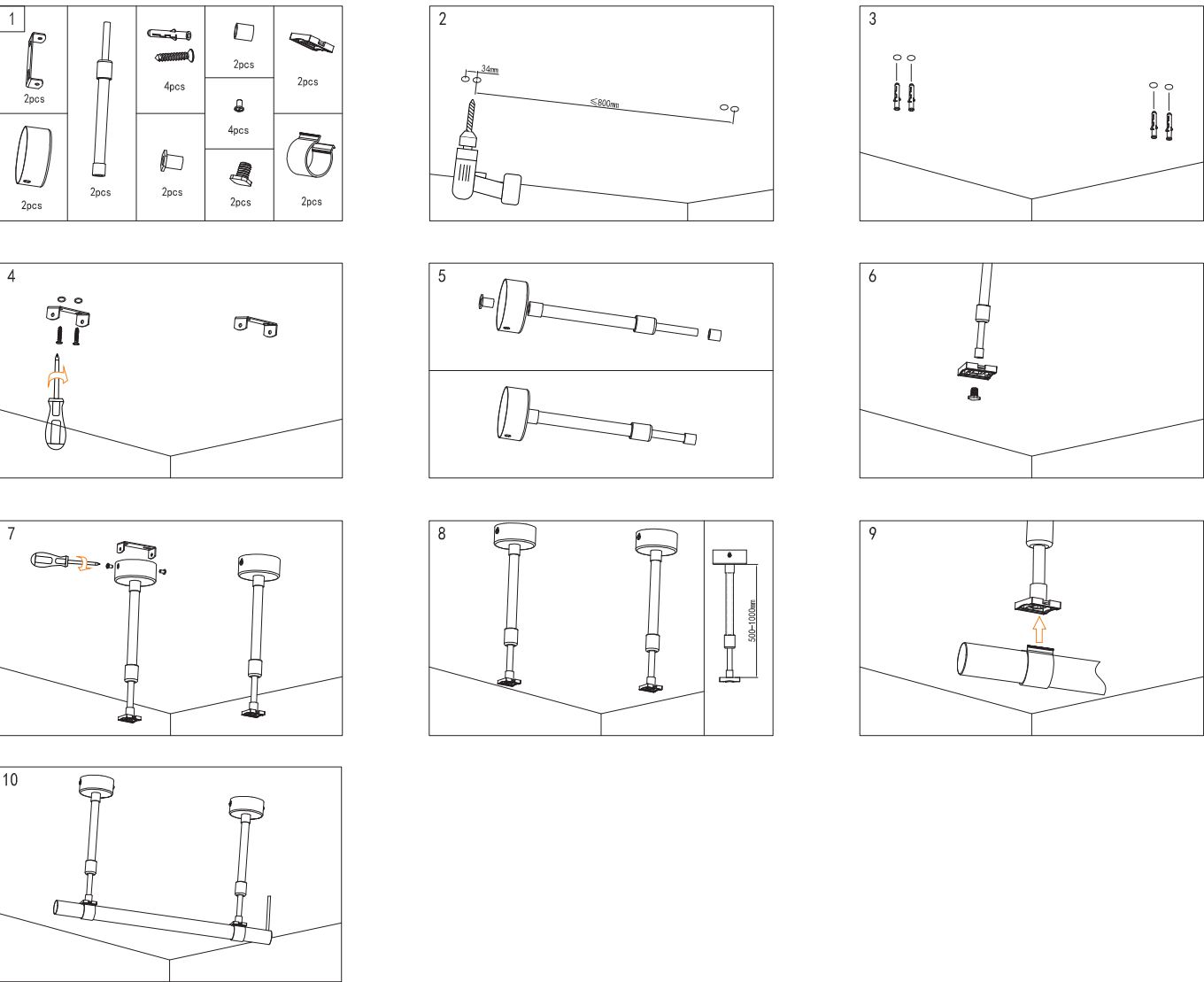
R25 - “—” type adjustable hanging mounting with open PC clips(R25-IA14)



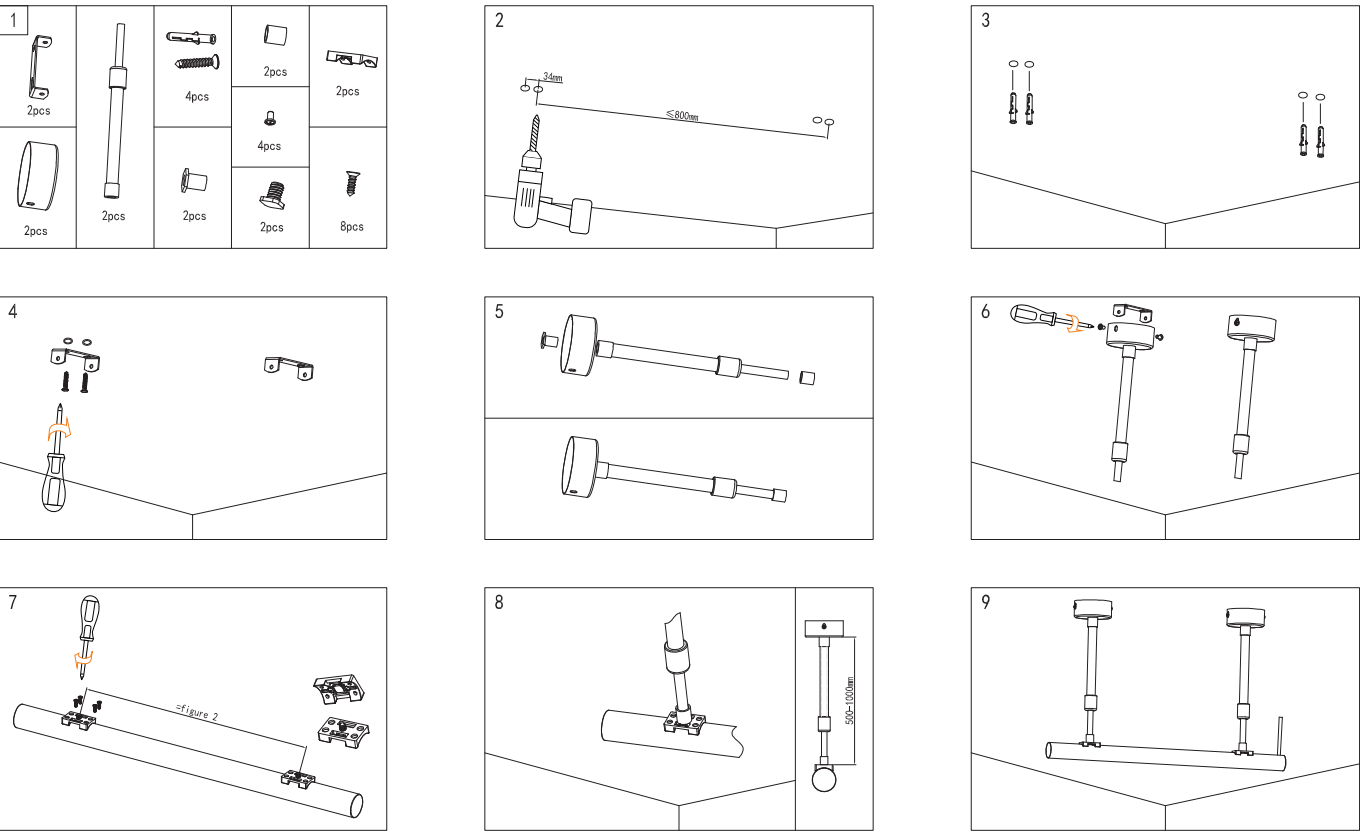
R25 - “—” type adjustable hanging mounting with PC profile(R25-IA15)



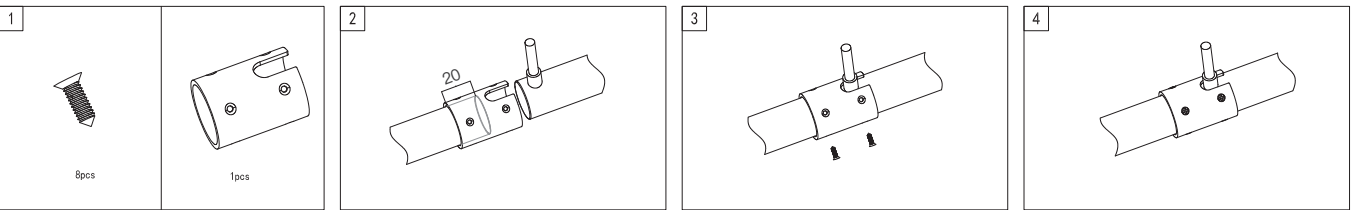
R25 - “—” type adjustable hanging mounting with closed PC clips(R25-IA16)



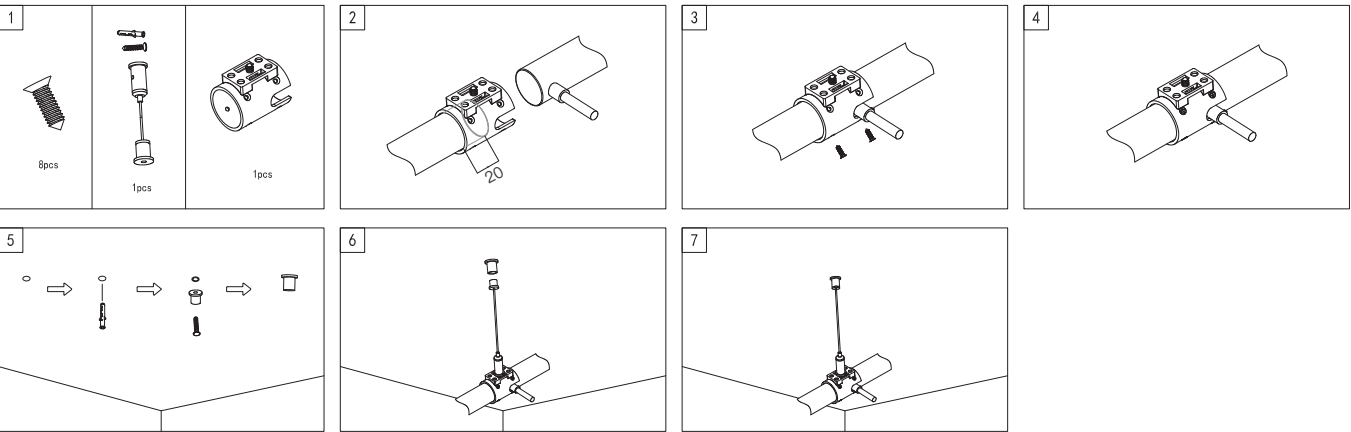
R25 - “—” type adjustable hanging mounting with concealed PC clips(R25-IA17)



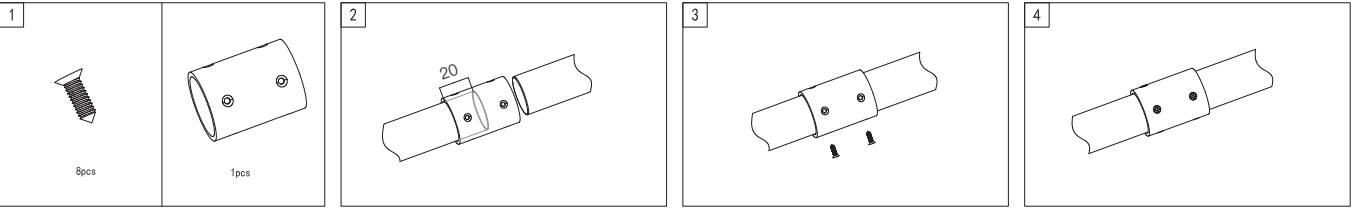
R25 side outlet transparent connector (R25-IA18)



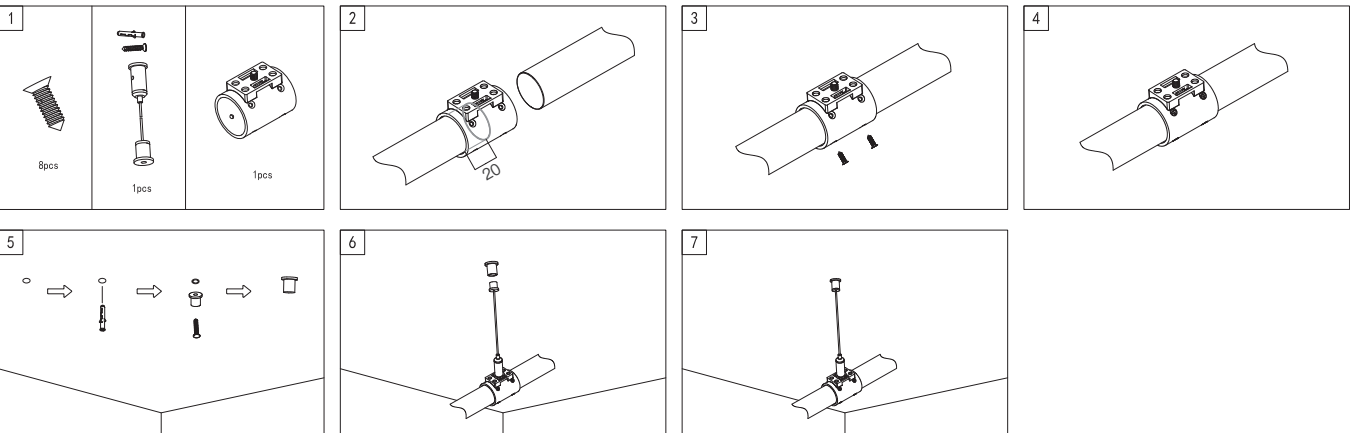
R25 side outlet transparent connector with lifting rope (R25-IA19)



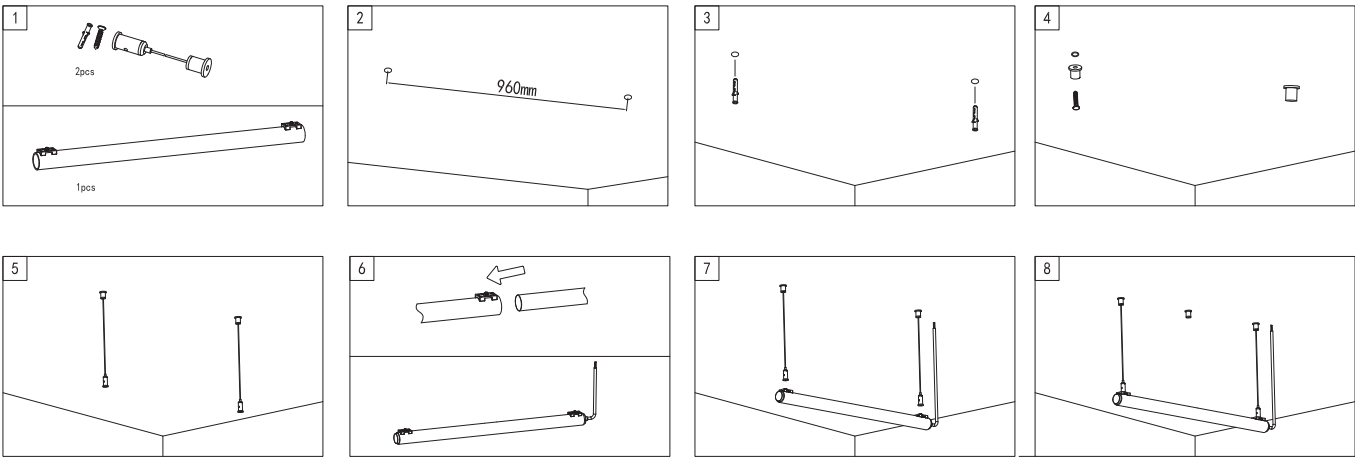
R25 transparent connector (R25-IA20)



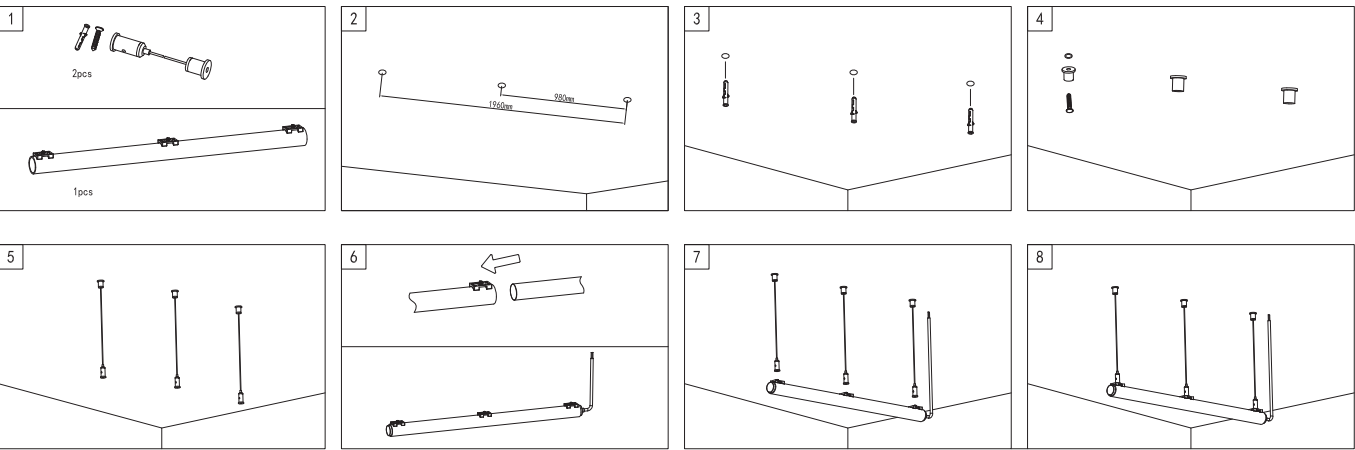
R25 transparent connector with lifting rope (R25-IA21)



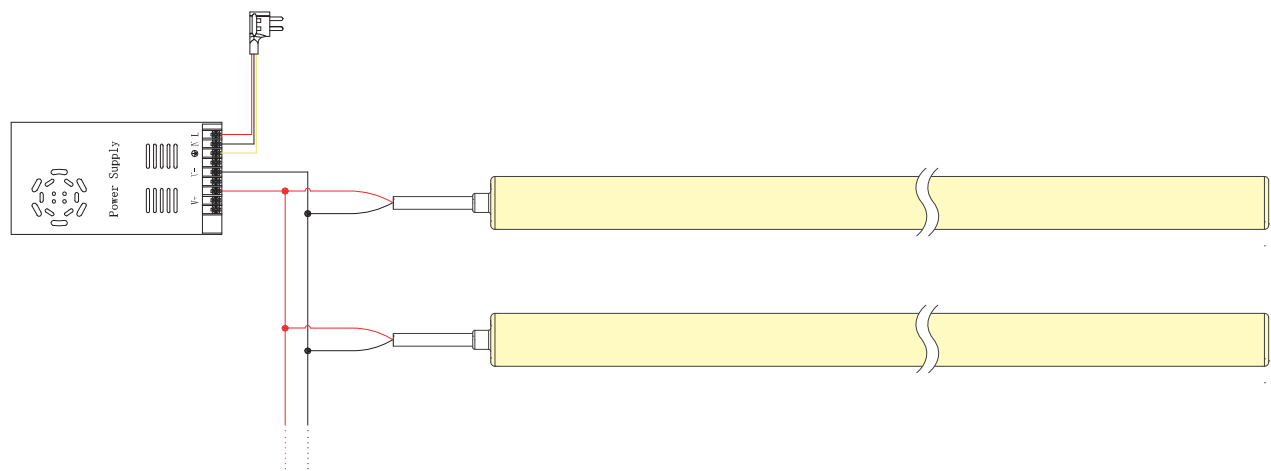
R25–Horizontal hanging circular tube1M (R25–1A22)



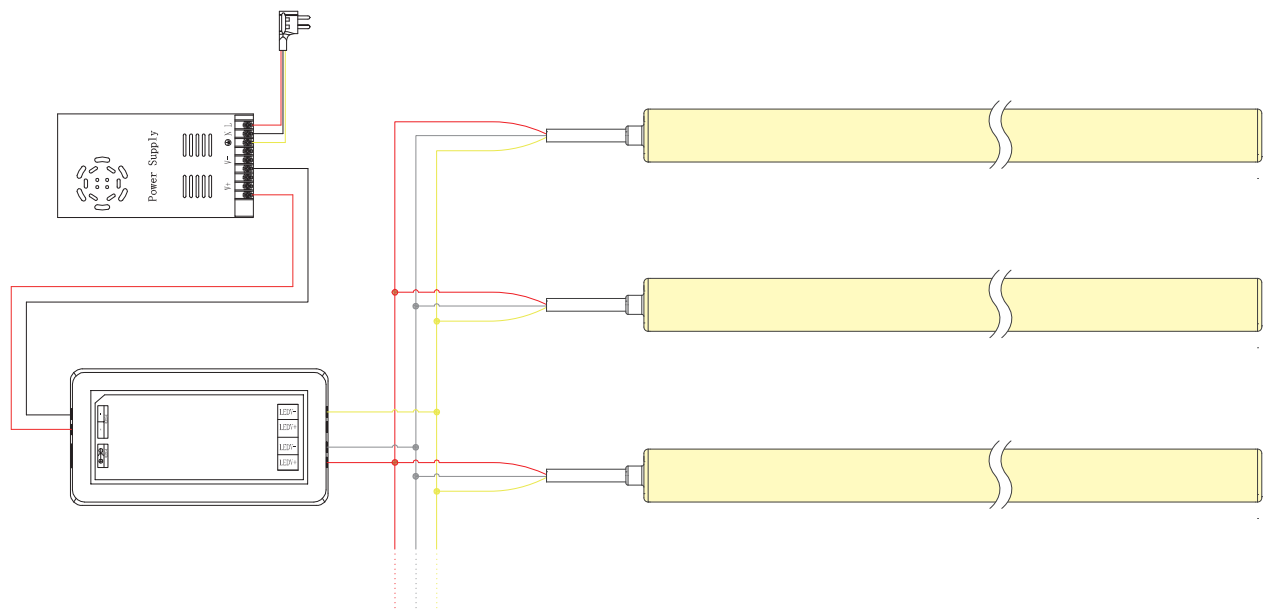
R25–Horizontal hanging circular tube 2M (R25–1A23)



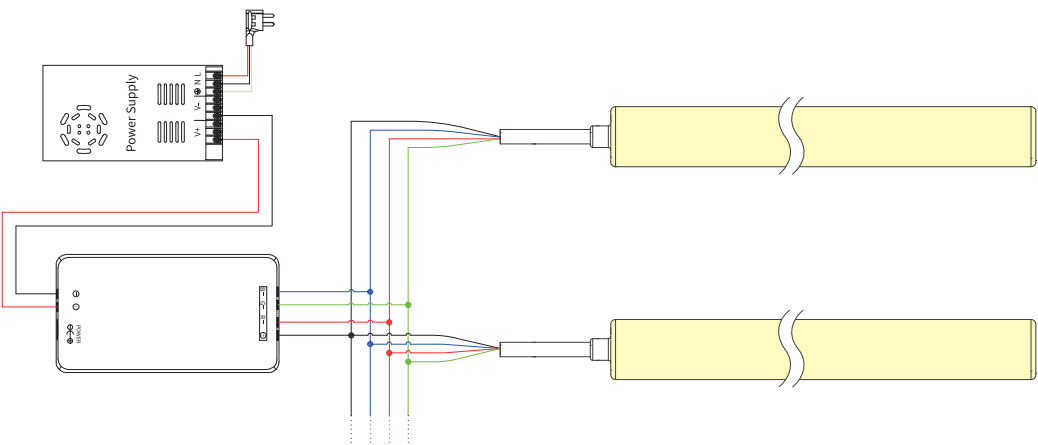
Connection diagram for single color light



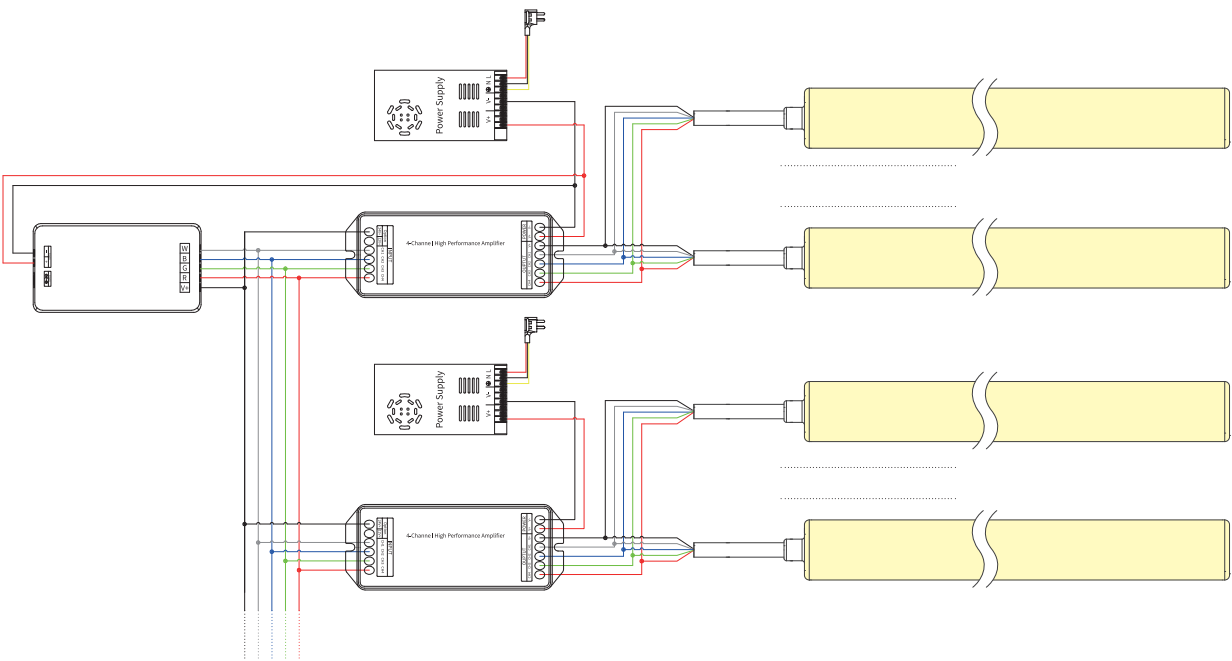
Connection diagram for tunable white light



RGB Connection Diagram

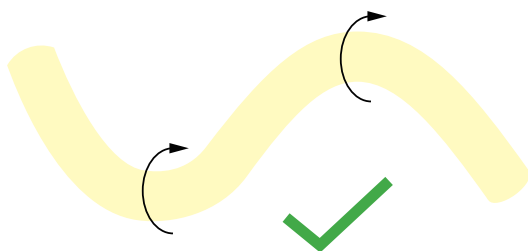


RGBW Connection Diagram

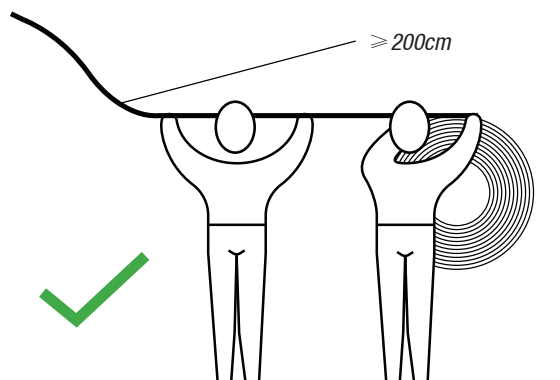


Installation/Use Precautions

- ◆ The unopened products and the unused products after unpacking, should be sealed in packaging bags to avoid long-term exposure.
- ◆ Please use DC24V isolated constant voltage switching power supply with ripple voltage less than 5%. Other types of power supply may damage the product or cause other safety risks.
- ◆ In practical application, the power supply should be retained with a 20% allowance (it is recommended to use only 80% power of the power supply) to ensure the stability of the power supply.
- ◆ Professional operators are recommended to wire and connect the power supply. It is strictly prohibited to connect the power supply with electricity in case of electric shock.
- ◆ Please confirm whether the voltage of the power supply is consistent with the voltage of the product before wiring.
- ◆ Please note the positive and negative sides of the power cord and connect them properly.
- ◆ When using multiple power supply, the situation of parallel connection of the positive pole of the power supply should be avoided. It will lead to instability of the power supply system and damage to the product after long-term operation.
- ◆ If the actual length of the application exceeds the specified length, it will lead to the phenomenon of heating and uneven brightness of the strip due to overload.
- ◆ During installation, please avoid twisting or irregular bending of the strip, and avoid any operation that will scratch the strip, otherwise it may cause irreparable damage to the product.
- ◆ In order to ensure the life and reliability of the strip, please ensure that the diameter of the bending should be greater than 200mm.
- ◆ For the sake of eye protection, please avoid looking directly at the illuminated surface for a long time.
- ◆ Non-professionals are strictly prohibited from installing, disassembling or repairing the strip.
- ◆ Do not use any acid or alkaline adhesive to fix the strip (including but not limited to glass glue, etc.)
- ◆ Different levels of waterproof, different use environment. IP65 is not suitable for immersion application.
- ◆ Due to structural differences, the final visual color of the strip will be slightly different for products of different sizes and specifications under the same color temperature value.
- ◆ Due to the difference in structure, the same color temperature value, different size/specification of the strip, their final visual color will be slightly different. Please make confirmation before use.
- ◆ It is forbidden to cut this product to avoid damage to the strip due to improper operation.
- ◆ Customers are not allowed to cut this product by themselves.

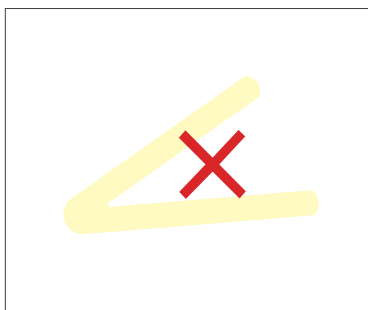


Bending diameter must be greater than 200mm



When the length of the strip is longer than 2 meters, have two people work together to install it.

Installation/Use Precautions



Small Angle bending is prohibited



Prohibit trample

Tests show that formaldehyde and benzene substances will make silicone products yellowing.

If the silicone products are used in the indoor environment of new decoration, epoxy floor paint, wall paint, wallpaper adhesive, all kinds of decoration materials, or new furniture, are likely to release formaldehyde and benzene substances. In order to avoid silicone material affected, it is suggested that the use of the environment after the completion of the new decoration, formaldehyde and benzene should be removed first, or it should be ventilated for a period of time before installing the strip.

BE A TRUSTED LED STRIP MANUFACTURER

Shenzhen GRILIGHT Technology Co.,Ltd

Tel: +8675527390189 Fax: +8675527397337

Web: www.grilite.com Contact: sale@grilight.com
