

PRODUCT SPECIFICATION

SIDE BEND NEON STRIP

- Side Bend

S1212

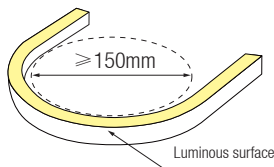
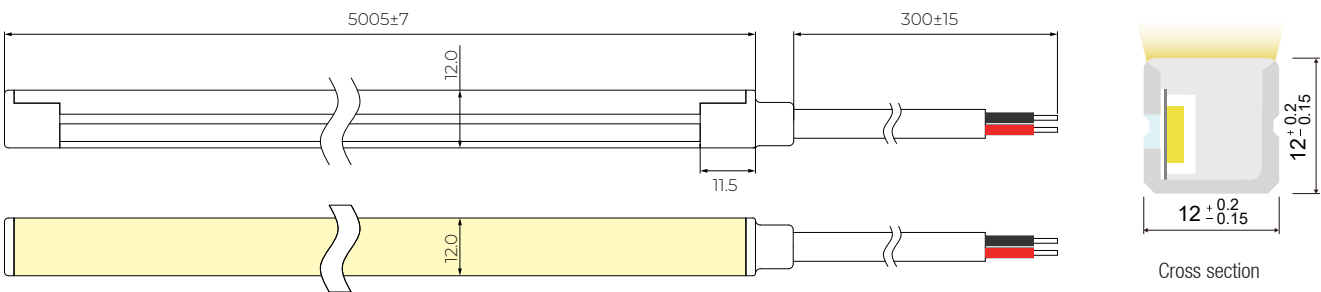
Shenzhen GRILIGHT Technology Co.,Ltd

Tel: +8675527390189 Fax: +8675527397337
Web: www.grilite.com Contact: sale@grilight.com

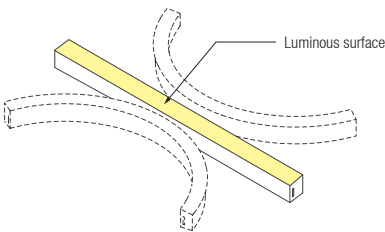


- It is made of Dow Chemical SILASTIC™ ET-7021 silicone rubber, which provides high transparency and high strength;
- Environmental protection grade silicone material, integrated extrusion molding process;
- Unique optical light distribution structure design, uniform lighting surface and no shadow;
- IP67 protection level, salt solution resistance, acids & alkalis and UV resistance;
- Excellent toughness, simple and stylish appearance, delicate and unique;
- 3-year warranty for pixel models, 5-year warranty for others, long-life LED ≥ 50000 hrs.

Dimension structure (Unit: mm)



Min Bending diameter



Bend horizontal only

Electrical Parameter

Voltage	LED PIN Temperature	Storage Temperature	Ambient Temperature
DC24V	Max. 65 C	-25 C ~ 60 C	Min.-25°C Max(Table below)

Specification

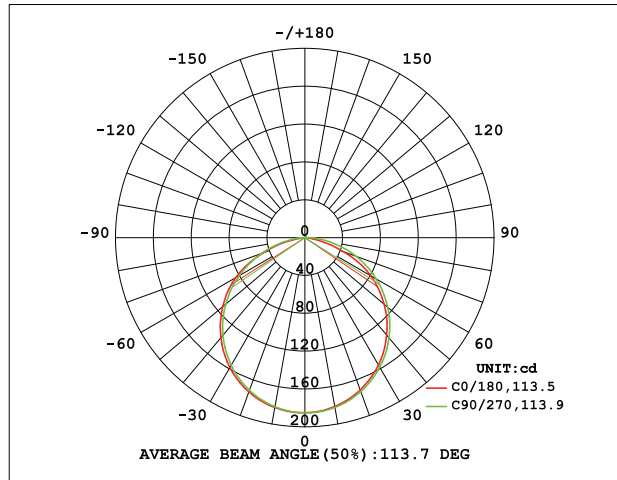
Power (w/m)	Efficacy (lm/w) @4000K	Max Ambient Temperature
10	51.3	45°C

Due to the tolerance of the production and electrical components, output value and electrical power can vary up to 10%

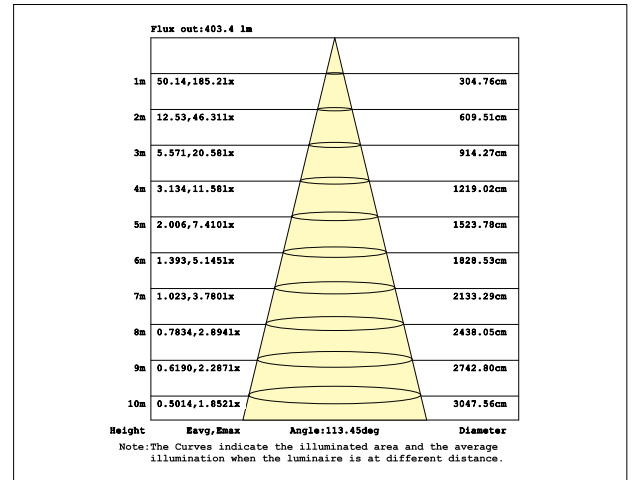
Length Standard

Length Range (M)	Final Length (mm)		Tolerance (mm)
	Integral end cap	Silicone end cap	
0<Neon Strip(L)≤5	L+5	L+5.5	±7
5<Neon Strip(L)≤10	L+5	L+5.5	±10
10<Neon Strip(L)≤15	L+5	L+5.5	±13
15<Neon Strip(L)≤20	L+5	L+5.5	±16

Light Distribution Curve

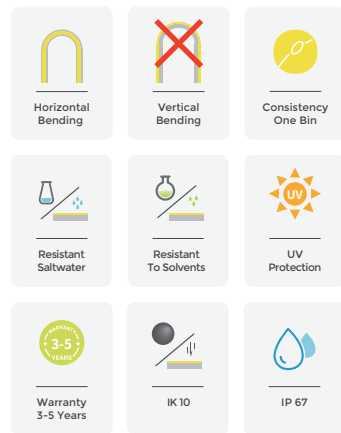


Illuminance curve



Note: The above data is based on 24V, 10W/M, single colour with 4000k colour temperature. If you need IES files for other types, please contact our sales department.

Parameter Table



- The given color temperature is the temperature of finished product.
- The given data are typical values due to the tolerances of the production process and the electrical components, values for light output and electrical power can vary up to 10%.
- All products can be dimmed; the dimmer's voltage should conform to the rated voltage of the led light.
- The output frequency of the dimmer of the constant-current led light should be less than 2K Hz, and the output PWM can control the led light.

Single color

CCT(K)	RA	Voltage	Power(W)	Lumen (LM/M)	Efficiency (LM/W)	Unit Length (mm)	Max. Run Length (M)	CC/CV
2700±150	≥90	DC24V	10	458	45.8	50	13	CC/CV
3000±150	≥90	DC24V	10	455	45.5	50	13	CC/CV
3500±200	≥90	DC24V	10	495	49.5	50	13	CC/CV
4000 ⁺⁴⁰⁰ ₋₂₀₀	≥90	DC24V	10	513	51.3	50	13	CC/CV
5000 ⁺⁵⁰⁰ ₋₃₀₀	≥90	DC24V	10	515	51.5	50	13	CC/CV
6500±500	≥90	DC24V	10	493	49.3	50	13	CC/CV
Red	--	DC24V	10	222	22.2	50	17	CC/CV
Green	--	DC24V	10	492	49.2	50	13	CC/CV
Blue	--	DC24V	10	102	10.2	50	13	CC/CV
Yellow	--	DC24V	10	148	14.8	50	17	CC/CV
Orange	--	DC24V	10	207	20.7	50	17	CC/CV
Pink	--	DC24V	10	455	45.5	50	13	CC/CV

CCT Tunable

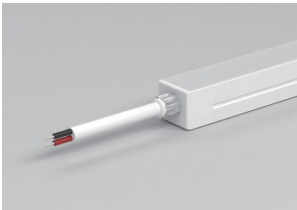
CCT(K)	RA	Voltage	Power(W)	Lumen (LM/M)	Efficiency (LM/W)	Unit Length (mm)	Max. Run Length (M)	CC/CV
2700±150	≥90	DC24V	5	225	45.1	62.5	5	CV
6500±500	≥90	DC24V	5	261	52.3	62.5	5	CV
2700+6500	≥90	DC24V	10	483	48.3	62.5	5	CV

RGB


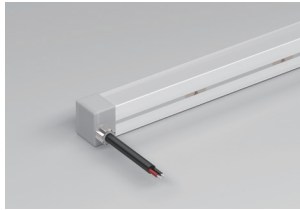
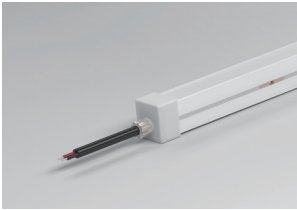
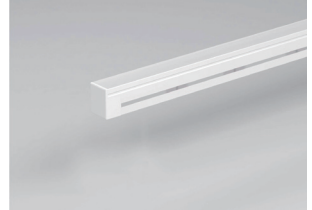
CCT(K)	RA	Voltage	Power(W)	Lumen (LM/M)	Efficiency (LM/W)	Unit Length (mm)	Max. Run Length (M)	CC/CV
R	--	DC24V	3.3	58	17.6	62.5	5	CV
G	--	DC24V	3.3	152	46.2	62.5	5	CV
B	--	DC24V	3.3	27	8.3	62.5	5	CV
RGB	--	DC24V	10	243	24.3	62.5	5	CV

Pixel RGB : SPI

CCT(K)	Voltage	Power(W)	Lumen (LM/M)	Efficiency (LM/W)	Unit Length (mm)	Max. Run Length (M)	Pixel (PCS)	IC Model
R	DC24V	5	50	10.1	100	5	10	WS2811
G	DC24V	5	147	29.5	100	5	10	WS2811
B	DC24V	5	24	4.8	100	5	10	WS2811
RGB	DC24V	12	199	16.6	100	5	10	WS2811



Technical drawing of a stepped cylindrical part. The front view (left) shows a total height of 115 and a base diameter of $\varnothing 8$. The side view (right) shows a total height of 200, a top diameter of 12, a shoulder diameter of 12, and a base diameter of $\varnothing 8$. The part has a shoulder with a height of 12 and a base with a height of 8.

[illegible]

Technical drawing of the 1000 Series 1/2" component. The drawing shows two views: a front view on the left and a side view on the right. The front view shows a square base with a width of 14.6 and a height of 14.6. A smaller square feature is attached to the top center, with a width of 14.6 and a height of 22.5. The side view shows a rectangular profile with a height of 14.0 and a width of 14.0.















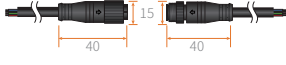















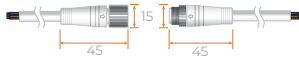



Technical drawings of two rectangular components. The left component is a square with side length 14.6. The right component is a rectangle with width 2.5 and height 14.6.



Page 03

Cable

Cable Type	Schematic Diagram	Specification	Core	Electrical Properties
PVC Cable		OD: 5.0mm / Inner core: 20AWG		Red V+, Black V-
		OD: 5.0mm / Inner core: 20AWG		CCT: Brown V+, White W, Yellow WW
		OD: 5.0mm / Inner core: 20AWG		SPI: Red V+, Green DI/DO, Black V-
		OD: 5.5mm / Inner core: 20AWG		Black V+, Blue B, Green G, Red R
Waterproof Connector with PVC Cable		OD: 5.0mm / Inner core: 20AWG M12Male / Female connecto		Red V+, Black V-
		OD: 5.0mm / Inner core: 20AWG M12Male / Female connecto		CCT: Brown V+, White W, Yellow WW
		OD: 5.0mm / Inner core: 20AWG M12Male / Female connecto		SPI: Red V+, Green DI/DO, Black V-
		OD: 5.5mm / Inner core: 20AWG M12Male / Female connecto		Black V+, Blue B, Green G, Red R
Silicone Cable		OD: 6.0mm / Inner core: 20AWG		Red V+, Black V-
		OD: 6.0mm / Inner core: 20AWG		Black V+, White W, Yellow WW
		OD: 6.0mm / Inner core: 20AWG		SPI: Red V+, Green DI/DO, Black V-
		OD: 6.0mm / Inner core: 20AWG		Black V+, Blue B, Green G, Red R
Waterproof Connector with Silicone Cable		OD: 6.0mm / Inner core: 20AWG M12Male / Female connecto		Red V+, Black V-
		OD: 6.0mm / Inner core: 20AWG M12Male / Female connecto		Black V+, White W, Yellow WW
		OD: 6.0mm / Inner core: 20AWG M12Male / Female connecto		SPI: Red V+, Green DI/DO, Black V-
		OD: 6.0mm / Inner core: 20AWG M12Male / Female connecto		Black V+, Blue B, Green G, Red R

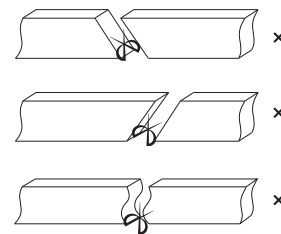
Cutting Mark



Remark:
The bottom of the led strip has transparent window,
the black marker is the cutting position



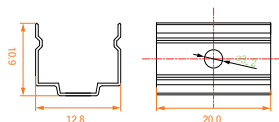
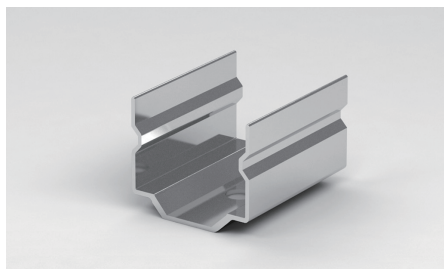
Use professional scissors
to cut vertically at the cutting mark



Please don't be feel free to cut and cut into an
oblique angle or cambered section.

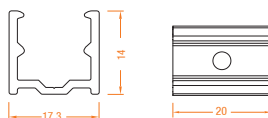
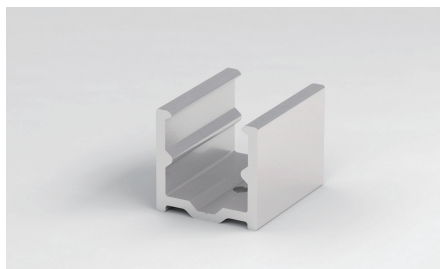
Accessories (Unit: mm)

Mounting Clips



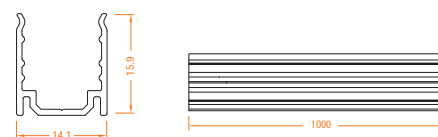
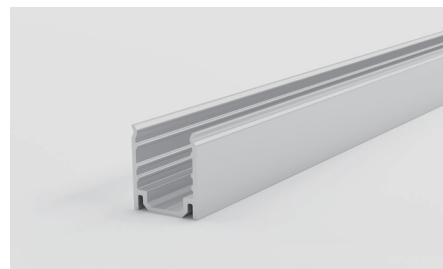
Dimension:
20x12.8x10.9
Accessories:
Screw M3x16 (SUS304)

Aluminium Mounting clips



Dimension:
20x17.3x14
Accessories:
Screw M3x16 (SUS304)

Aluminium Profile



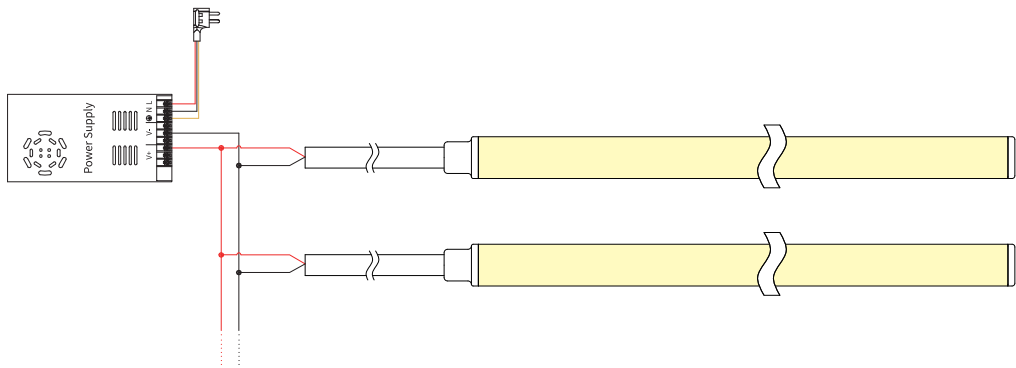
Dimension:
1000(±5)x14.1x15.9
Accessories:
Screw M3x16 (SUS304)

Suspension Installation

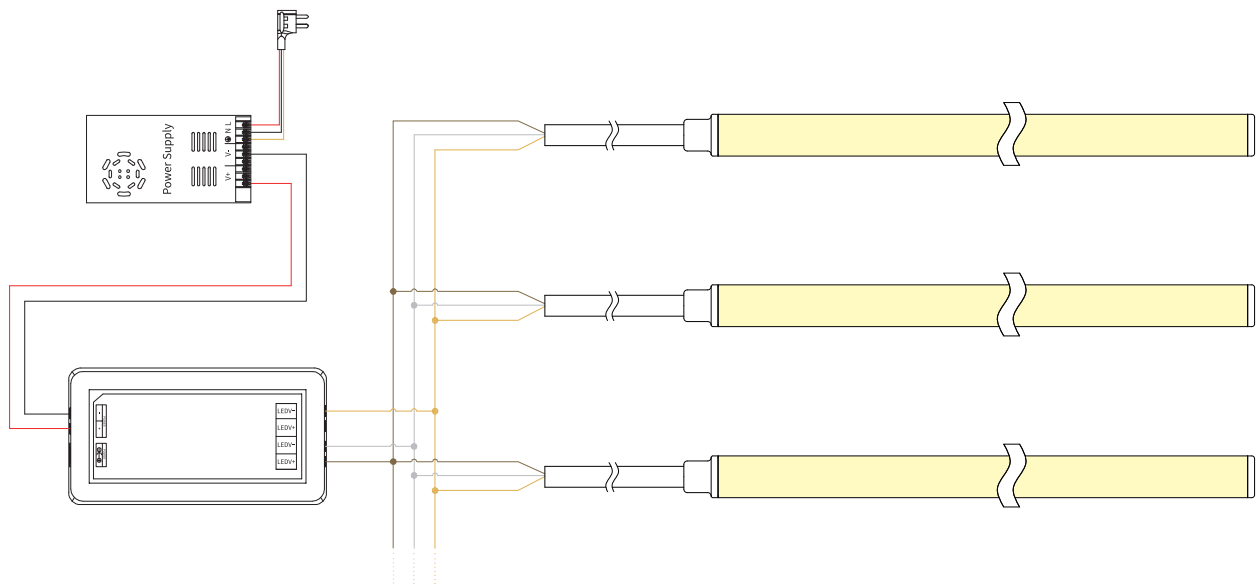


- Use with the profile

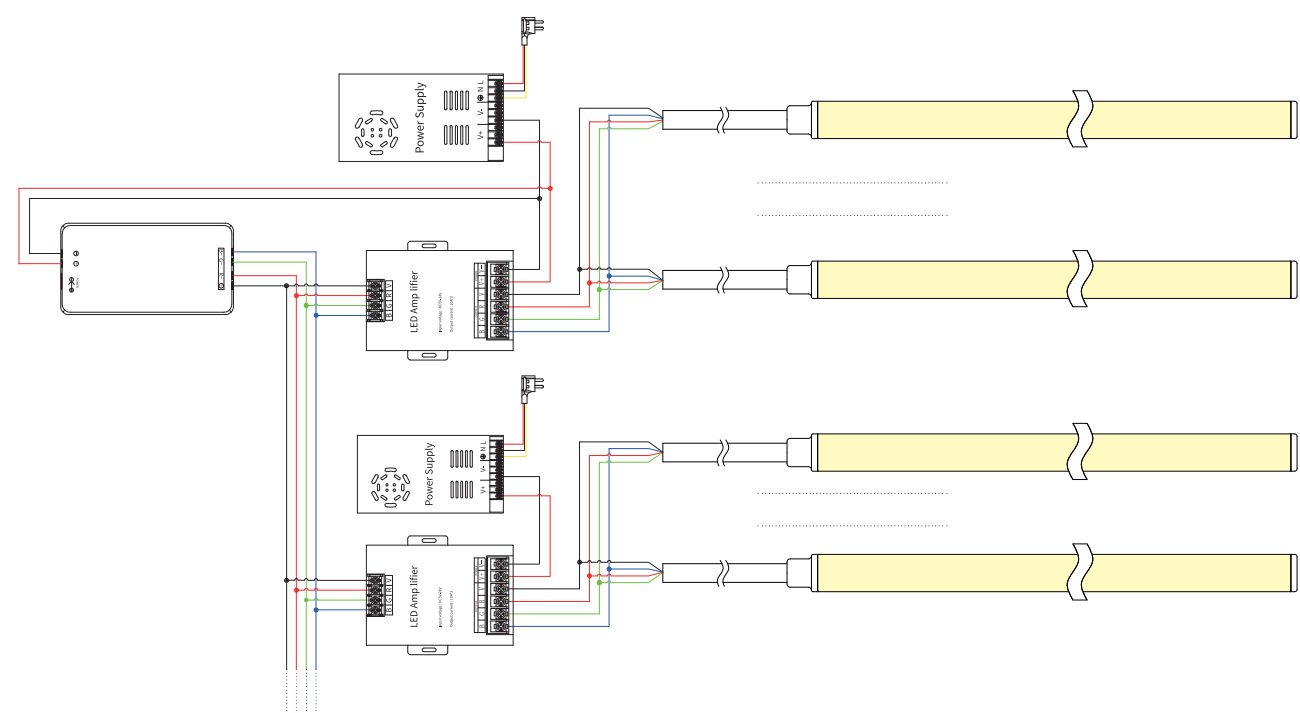
Single Color Connection Diagram



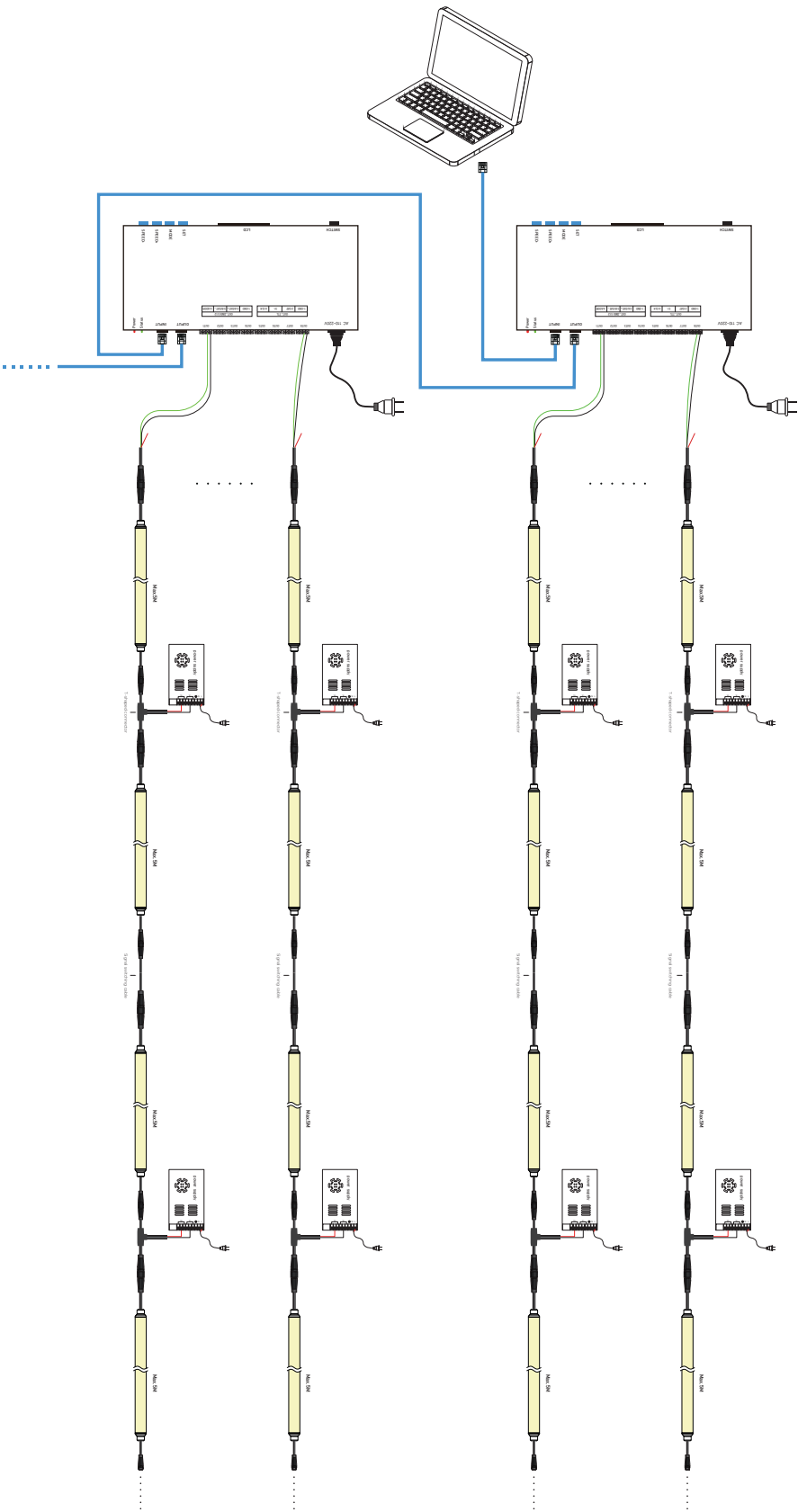
Tunable white Connection Diagram



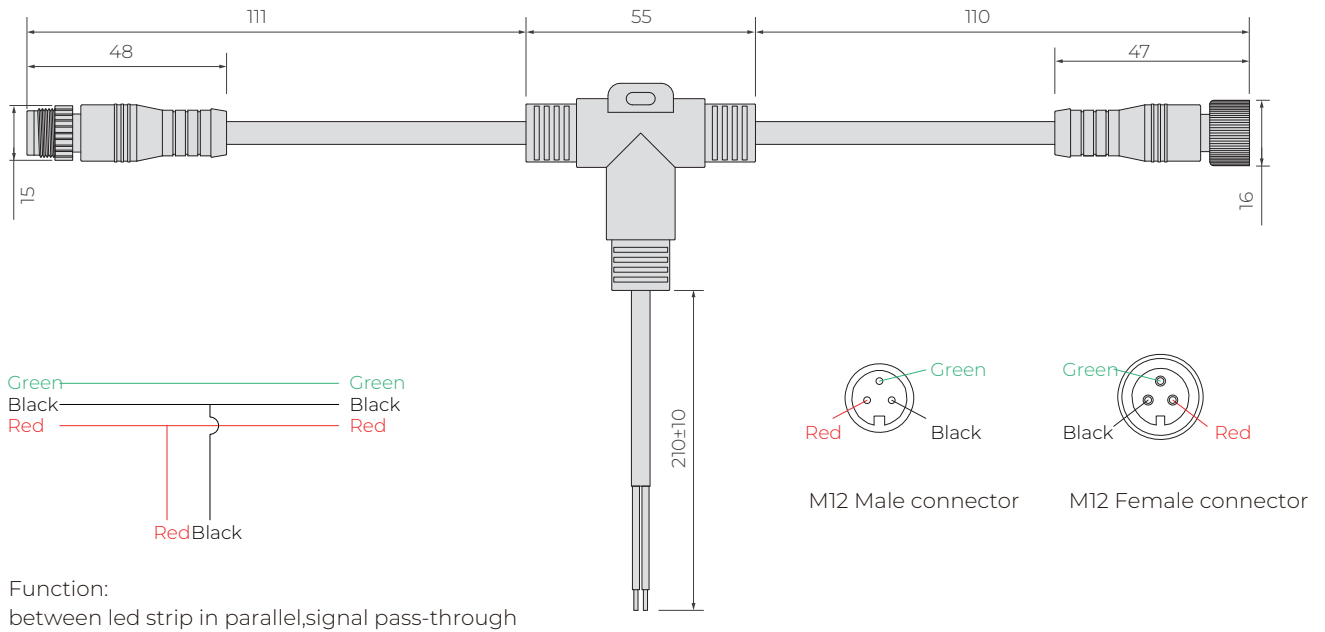
RGB Connection Diagram



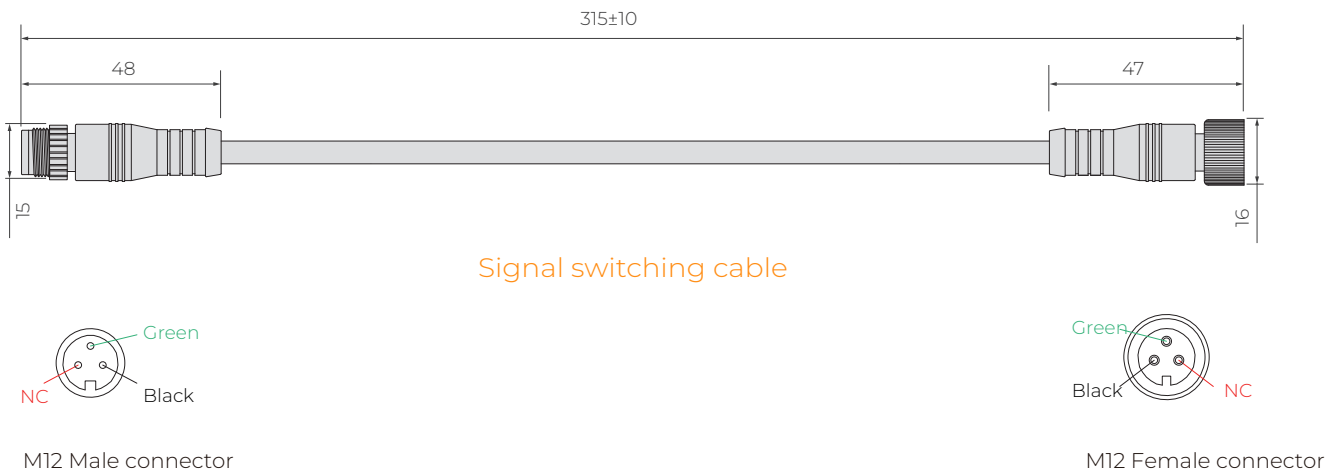
Schematic Diagram of Control System Connection - SPI Signal Type



SPI signal type strip light with accessory cable (Unit: mm)

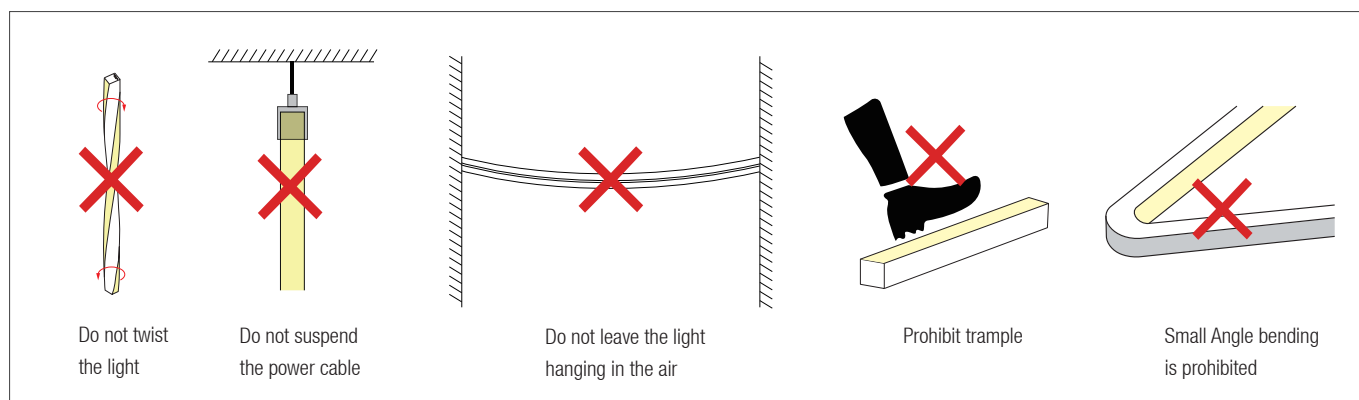
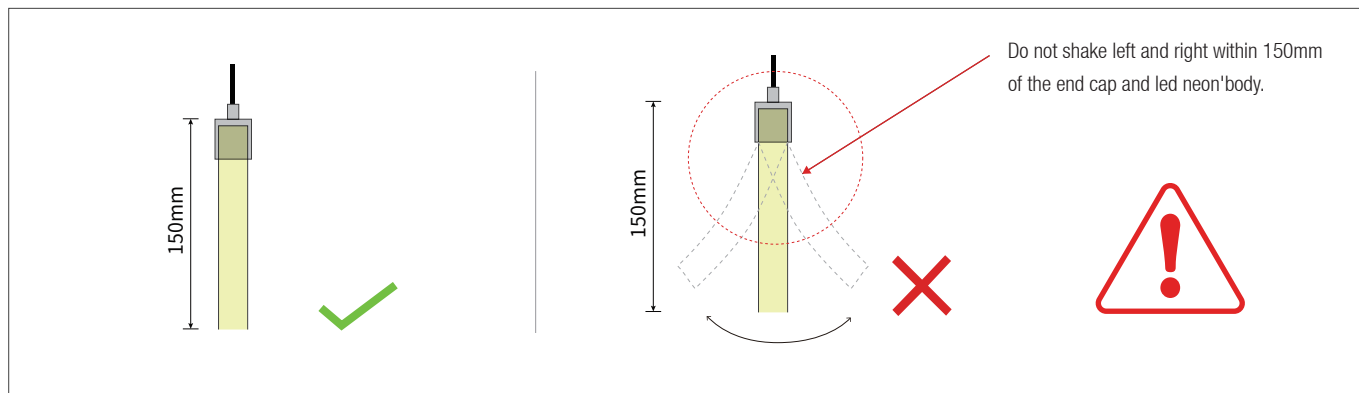


T-type 3 channel connector

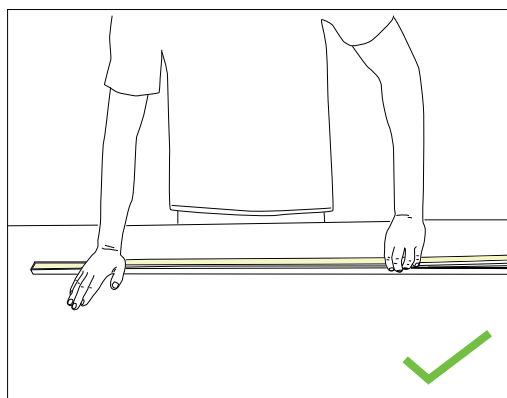


Signal switching cable

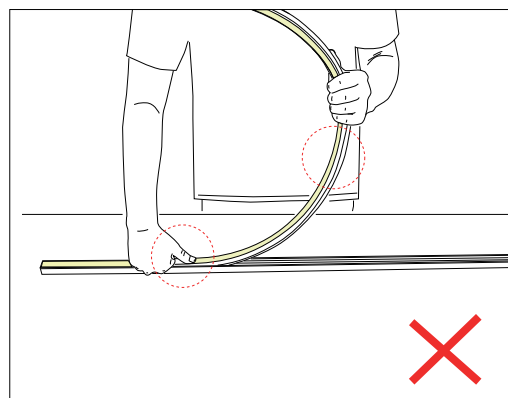
Installation Precautions



Put it in the profile



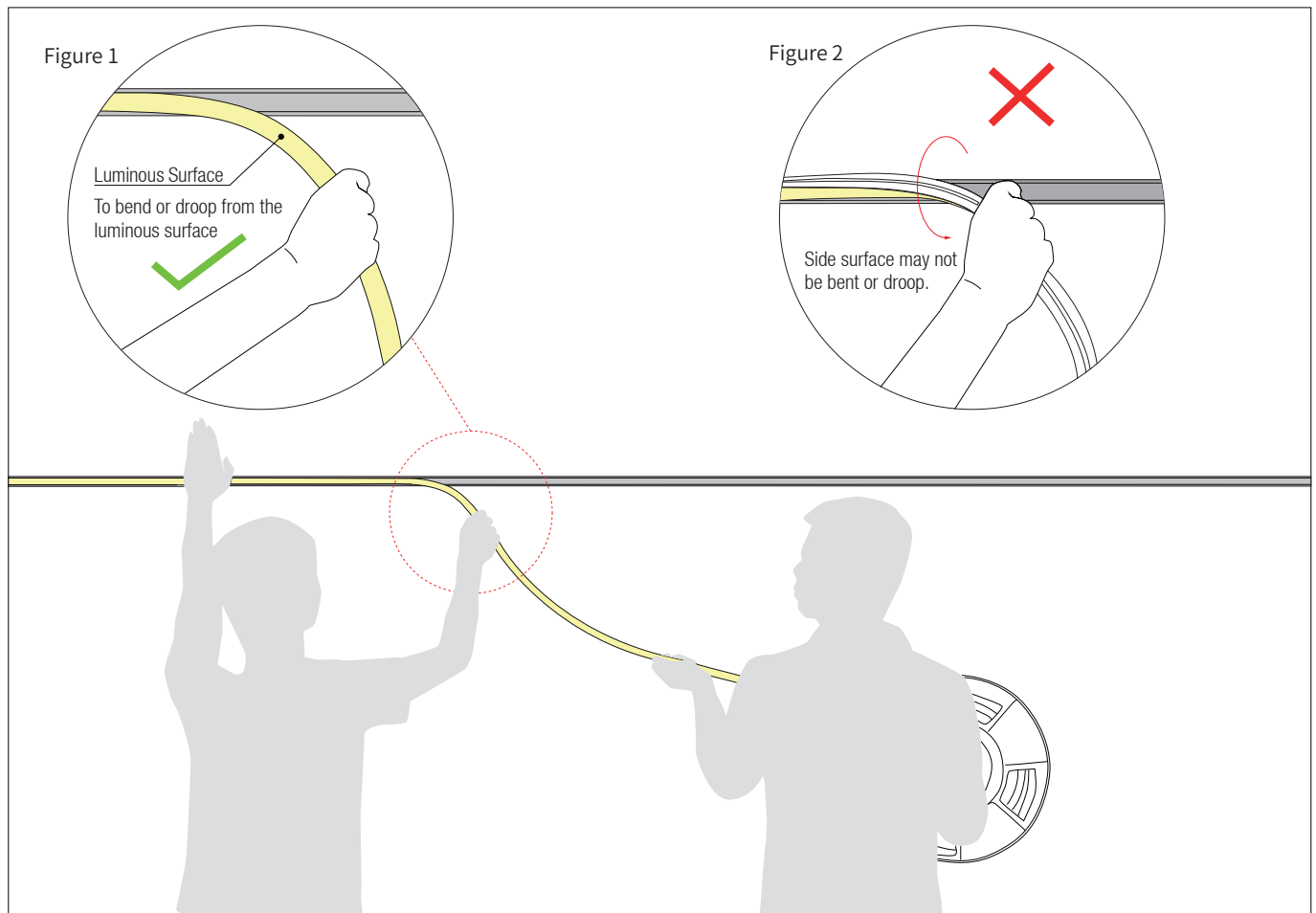
- Please press the LED strip with your palm to slowly insert the LED strip into the groove, and gently straighten the LED strip above the groove with your right hand.
- Try to keep the LED strip in a flat state during the installation process.



- Do not press the LED strip with a single finger, it is easy to damage the internal parts of the LED strip.
- The bent arc of the LED strip should not be too large during installation.

Installation Precautions — Side Mounted

(If the length of the light is more than 2 meters, two persons must work together to install it.)



1. Installer:

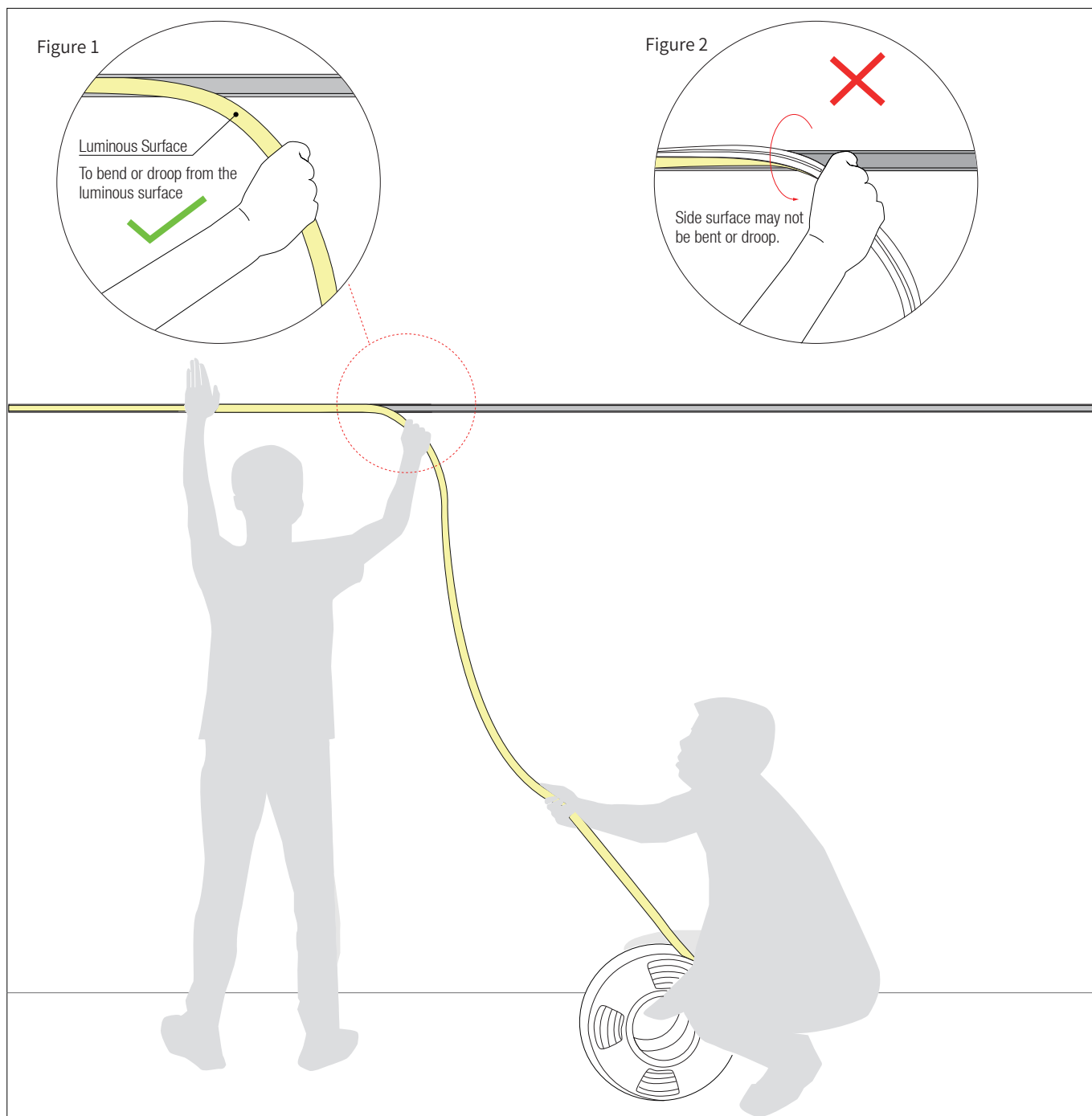
- Press the light with the palm of the left hand to slowly load it into the slot. Straighten the light with right hand so that it droop it in the direction of your hand. See Figure 1.
- Side surface may not be bent or droop, See Figure 2.

2. Assistant:

- Cooperate with the installer to lift the reel of the light, and then slowly deliver the light to installer. Do not pull or twist the light during the installation.

Installation Precautions — Side Mounted

(If the length of the light is more than 5 meters, two persons must work together to install it.)



1.Installer:

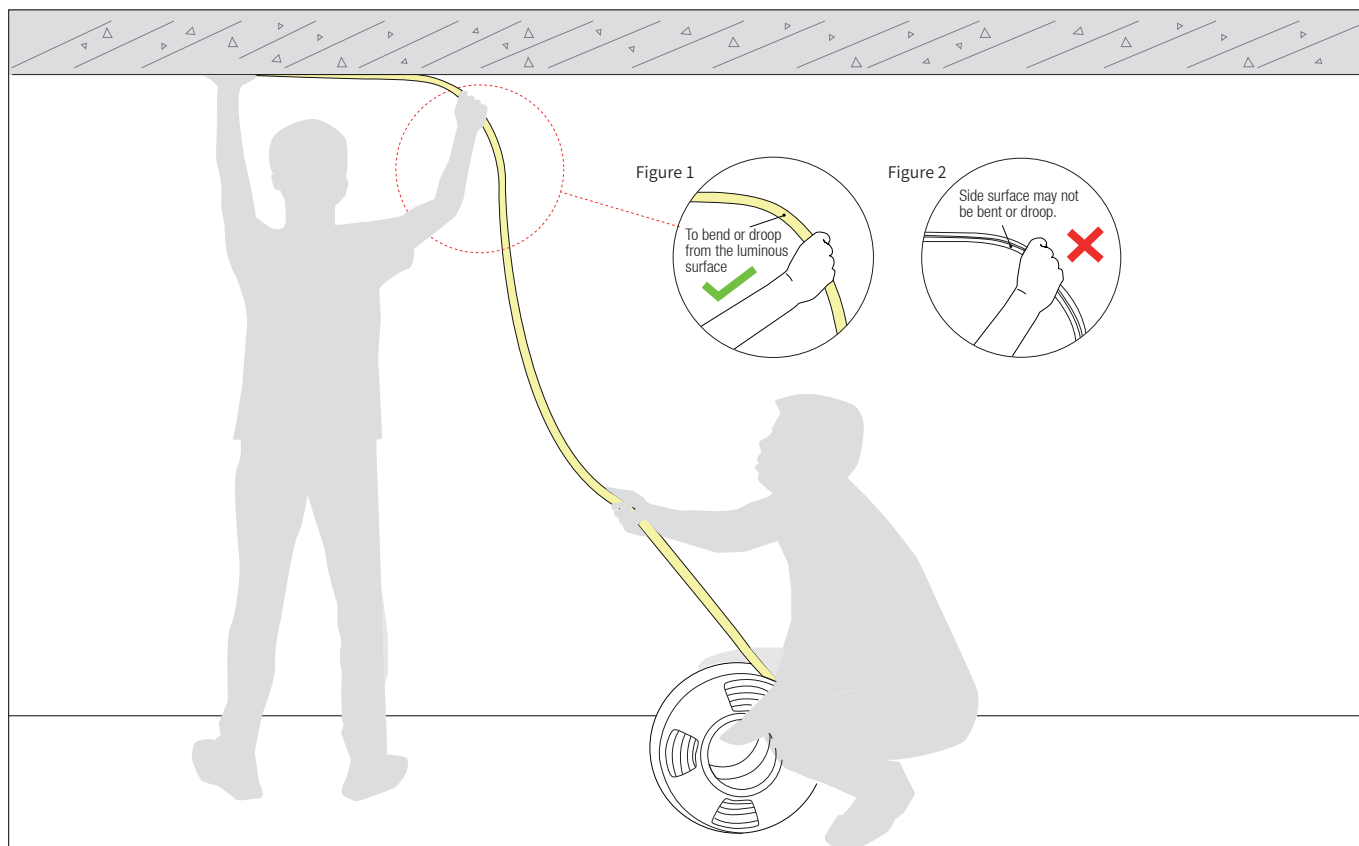
- Press the light with the palm of the left hand to slowly load it into the slot. Straighten the light with right hand so that it droop it in the direction of your hand. See Figure 1.
- Side surface may not be bent or droop, See Figure 2.

2.Assistant:

- Cooperate with the installer to slowly deliver the light to installer. Do not pull or twist the light during the installation.

Installation Precautions — Top Mounted

(If the length of the light is more than 2 meters, two persons must work together to install it.)



1.Installer:

- Press the light with the palm of the left hand to slowly load it into the slot. Straighten the light with right hand, hold it and rotate it 90° to droop it in the direction of your hand. See Figure 1.
- Side surface may not be bent or droop, See Figure 2.

2.Assistant:

- Cooperate with the installer to slowly deliver the light to installer. Do not pull or twist the light during the installation.

Notes

The selection of the cable specification at the output end of the power supply, it depends on the total current of the load and the length of the cable. It is recommended to select according to the following table:

Current of the light	Specifications of the cable								
	L=1M	L=2M	L=4M	L=6M	L=8M	L=10M	L=12M	L=14M	L=16M
1A	AWG26	AWG23	AWG21	AWG18	AWG18	AWG17	AWG16	AWG15	AWG15
2A	AWG23	AWG21	AWG18	AWG16	AWG15	AWG14	AWG13	AWG12	AWG12
3A	AWG22	AWG18	AWG16	AWG14	AWG13	AWG12	AWG11	AWG11	AWG10
4A	AWG21	AWG18	AWG15	AWG13	AWG12	AWG11	AWG10	AWG9	AWG9
5A	AWG20	AWG17	AWG14	AWG12	AWG11	AWG10	AWG9	AWG9	AWG8
6A	AWG18	AWG16	AWG13	AWG11	AWG10	AWG9	AWG8	AWG8	AWG7
7A	AWG18	AWG15	AWG12	AWG11	AWG9	AWG8	AWG8	AWG7	AWG6
8A	AWG17	AWG15	AWG12	AWG10	AWG9	AWG8	AWG7	AWG7	AWG6
9A	AWG17	AWG14	AWG11	AWG10	AWG8	AWG7	AWG7	AWG6	AWG5
10A	AWG16	AWG14	AWG11	AWG9	AWG8	AWG7	AWG6	AWG6	AWG5

- ※ The pictures in the Product Specification are for reference only, please refer to the actual product.
- ※ The unused light should be sealed with the packaging bag to avoid prolonged exposure.
- ※ Please use DC24V isolated constant voltage power supply with ripple voltage less than 5%. Using other types of power supply may damage the light or cause other safety risks.
- ※ In practical application, 20% allowance should be reserved for power supply to ensure the stability of power supply.
- ※ It is recommended that professionals connect the power supply. Do not connect the power supply with live power to avoid electric shock.
- ※ Please confirm whether the voltage of the power supply is consistent with the voltage of the light; Pay attention to the positive and negative poles of the power cord, do not connect wrong, so as not to cause product damage;
- ※ When multiple power supplies are used, ensure that the positive poles of the power supply are not connected in parallel. Otherwise, the power supply system may be unstable or damaged after long-term operation.
- ※ If the actual application length exceeds the specified length, it will lead to overload, heating and uneven brightness of the light.
- ※ During installation, please do not scratch, twist, or bend the light irregularly. Otherwise, the light may be damaged beyond repair.
- ※ To ensure the life and reliability of the light, please do not over bend the light, which will damage the product itself.
- ※ To protect your eyes, please avoid staring at the glowing surface of the light for a long time.
- ※ Non-professionals are forbidden to install, disassemble and maintain the product.
- ※ Do not use any acid or alkaline adhesive to fix the light (including but not limited to glass glue, etc.)
- ※ IP67 products are not suitable for long-term immersion in water; IP68 products are only customized by the factory. After cutting and processing by users themselves, there is a risk that IP68 protection level cannot be reached
- ※ Because of the difference in structure, even if the same color temperature value, different sizes of light will look slightly different colors. Please confirm it before use.

Tests showed that methanol and benzenes will have yellowing effects on silicone.

In the newly decorated interior environment, epoxy floor paint, wall paint, wallpaper adhesive, various decoration materials or new furniture, they are likely to release of methanol and benzenes.

It is recommended to remove methanol and benzenes first, or ventilate for a period of time in the newly decorated interior environment before install the silicone neon light, to avoid affecting the silicone body.

BE A TRUSTED LED STRIP MANUFACTURER

Shenzhen GRILIGHT Technology Co.,Ltd

Tel: +8675527390189 Fax: +8675527397337
Web: www.grillite.com Contact: sale@grillight.com