

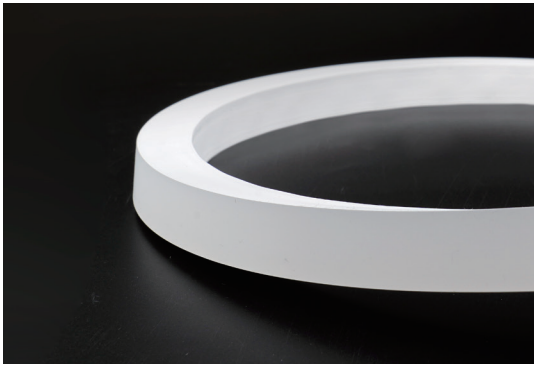
PRODUCT SPECIFICATION

TOP BEND NEON STRIP

- ---

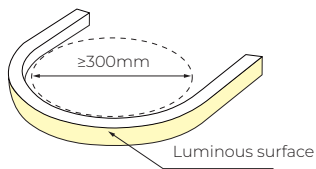
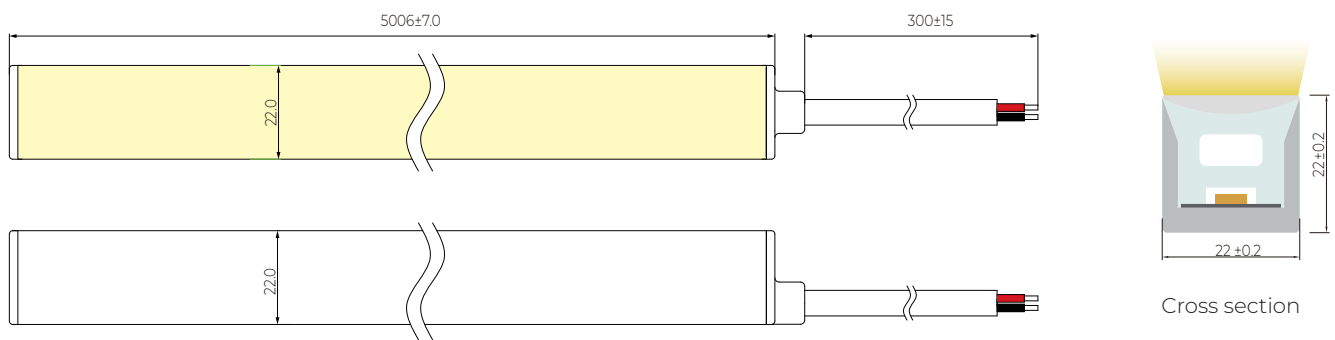
Top Bend

T2222

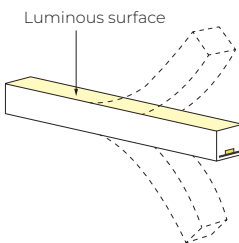


- High light transmittance, environmental protection grade Silicone material, integrated extrusion molding process
- Unique optical light distribution structure design, surface light uniform without shadow
- IP67 protection grade, salt solution resistance, acid and alkali corrosion resistance, UV resistance
- Excellent toughness, simple and stylish appearance, exquisite and unique
- 5 years warranty, long-life LED≥ 50,000 hours

Dimension structure (Unit: mm)



Min Bending diameter



Bend vertical only

Electrical Parameter

Voltage	LED PIN Temperature	Storage Temperature	Ambient Temperature
DC24V	Max. 65 C	-25 C ~ 60 C	Min.-25°C Max(Table below)

Specification

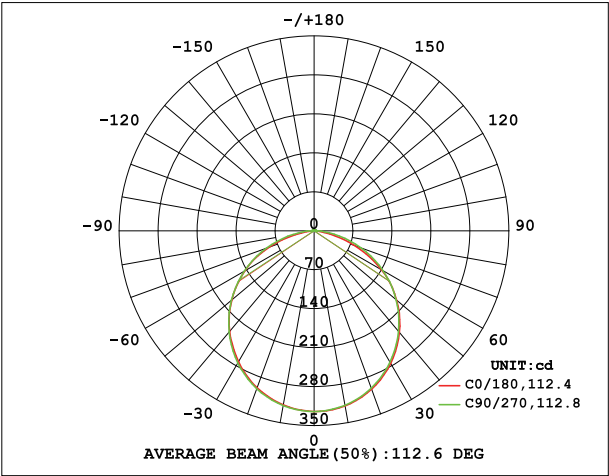
Power (w/m)	Efficacy (lm/w) @4000K	Max Ambient Temperature
5	55.5	55 C
10	51.1	45 C
15	48.5	35 C

Due to the tolerance of the production and electrical components, output value and electrical power can very up to 10%

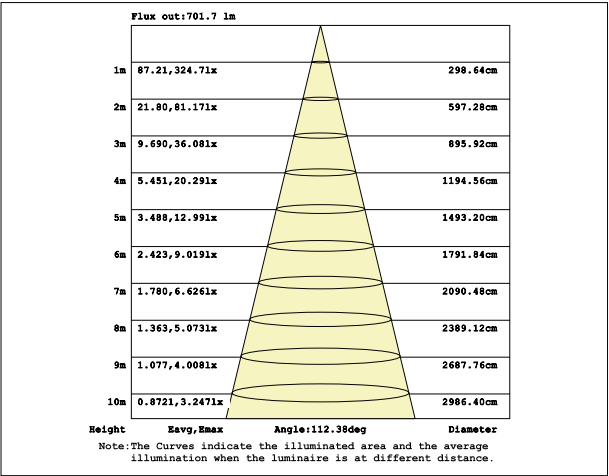
Length Standard

Length Range (M)	Final Length (mm)		Tolerance (mm)
	Integral end cap	Silicone end cap	
0<Neon Strip(L)≤5	L+6	L+4	±7

Light Distribution Curve

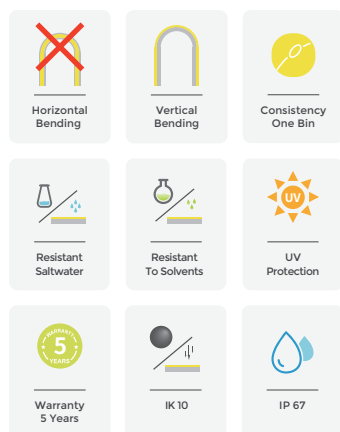


Illuminance curve



Note: The above data is based on 24V ,10W/M, single colour with 4000k colour temperature. If you need IES files for other types, please contact our sales department.

Parameter Table

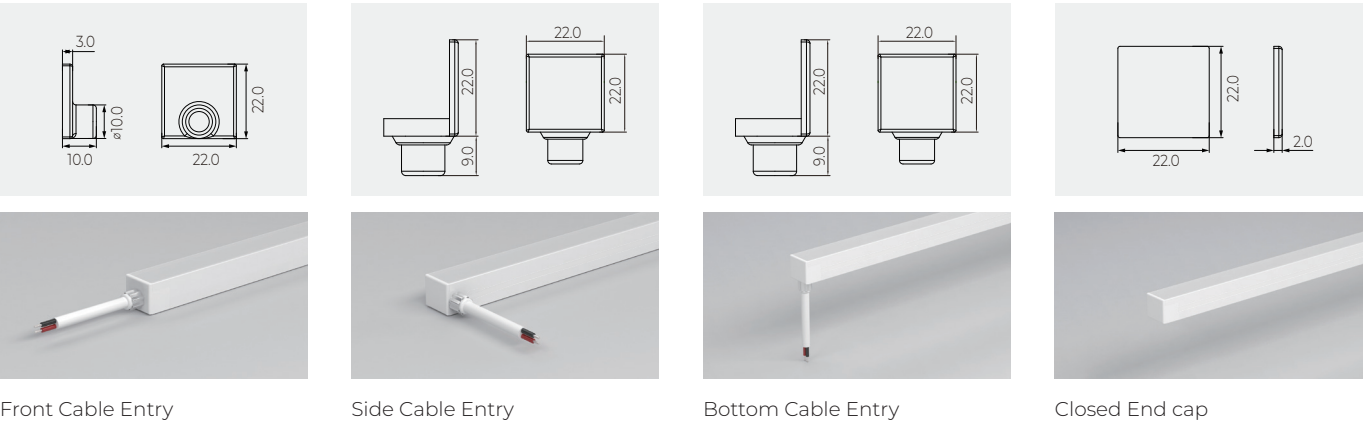


- The maximum series length refers to the maximum length of the light strip with single-end power supply in series under the standard 30CM cable.
- The given color temperature is the temperature of finished product.
- The given data are typical values due to the tolerances of the production process and the electrical components, values for light output and electrical power can vary up to 10%.
- All products can be dimmed; the dimmer's voltage should conform to the rated voltage of the led light.

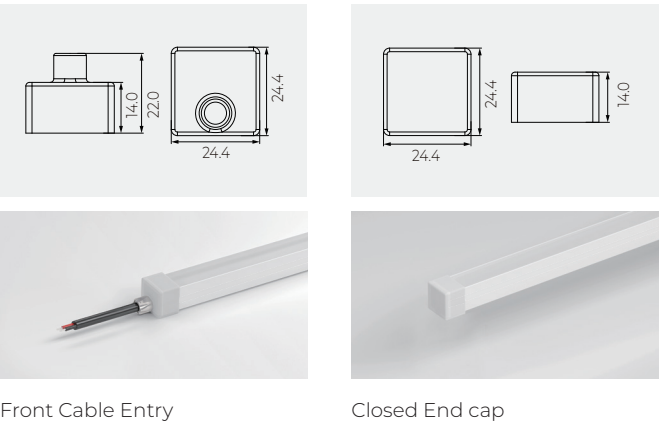
CCT(K)	RA	Voltage	Power(W)	Lumen (LM/M)	Efficiency (LM/W)	Unit Length (mm)	Max.run length(m)	CC/CV
1800±100	≥90	DC24	5	216	43.2	50	5	CV
			10	397	39.7	50	5	CV
			15	554	37.0	50	5	CV
2100±150	≥90	DC24	5	242	48.3	50	5	CV
			10	445	44.5	50	5	CV
			15	620	41.4	50	5	CV
2400±150	≥90	DC24	5	267	53.4	50	5	CV
			10	491	49.1	50	5	CV
			15	685	45.7	50	5	CV
2700±150	≥90	DC24	5	282	56.4	50	5	CV
			10	519	51.9	50	5	CV
			15	724	48.3	50	5	CV
3000±150	≥90	DC24	5	289	57.7	50	5	CV
			10	531	53.1	50	5	CV
			15	741	49.4	50	5	CV
3500±200	≥90	DC24	5	299	59.8	50	5	CV
			10	550	55.0	50	5	CV
			15	767	51.2	50	5	CV
4000 ⁺⁴⁰⁰ ₋₂₀₀	≥90	DC24	5	278	55.5	50	5	CV
			10	511	51.1	50	5	CV
			15	728	48.5	50	5	CV
5000 ⁺⁵⁰⁰ ₋₃₀₀	≥90	DC24	5	302	60.4	50	5	CV
			10	556	55.6	50	5	CV
			15	775	51.7	50	5	CV
6500±500	≥90	DC24	5	281	56.2	50	5	CV
			10	517	51.7	50	5	CV
			15	721	48.0	50	5	CV
Red	--	DC24	5	123	24.5	50	5	CV
			10	236	23.6	50	5	CV
			15	336	22.4	50	5	CV
Green	--	DC24	5	279	55.7	50	5	CV
			10	535	53.5	50	5	CV
			15	762	50.8	50	5	CV
Blue	--	DC24	5	52	10.3	50	5	CV
			10	99	9.9	50	5	CV
			15	141	9.4	50	5	CV
Yellow	--	DC24	5	93	18.5	50	5	CV
			10	178	17.8	50	5	CV
			15	253	16.9	50	5	CV
Orange	--	DC24	5	108	21.6	50	5	CV
			10	207	20.7	50	5	CV
			15	295	19.7	50	5	CV
Pink	--	DC24	5	241	48.3	50	5	CV
			10	463	46.3	50	5	CV
			15	660	44.0	50	5	CV

Cable Entry (Unit: mm)



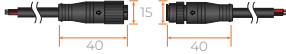

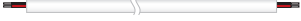

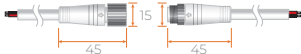

Integral end cap (IP67)



Silicone end cap (IP67)



Cable

Cable Type	Schematic Diagram	Specification	Core	Electrical Properties
PVC Cable		OD: 5.0mm / Inner core: 20AWG		Red V+, Black V-
Waterproof Connector with PVC Cable		OD: 5.0mm / Inner core: 20AWG M12Male / Female connecto		Red V+, Black V-
Silicone Cable		OD: 6.0mm / Inner core: 20AWG		Red V+, Black V-
Waterproof Connector with Silicone Cable		OD: 6.0mm / Inner core: 20AWG M12Male / Female connecto		Red V+, Black V-

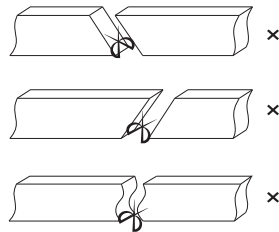
Cutting Mark



Remark:
The black marker is the cutting position



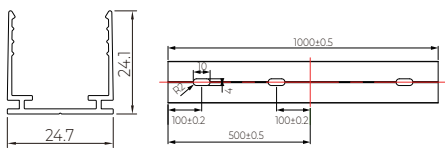
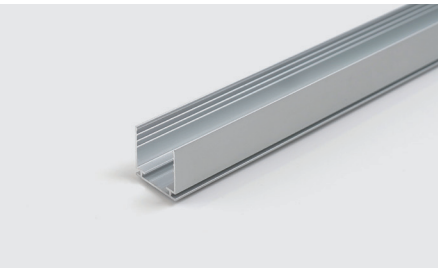
Use professional scissors to cut vertically
at the cutting mark



Please don't be feel free to cut and cut into an
oblique angle or cambered section.

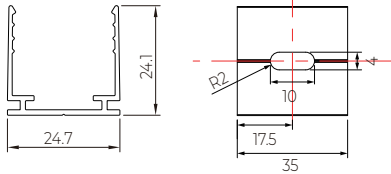
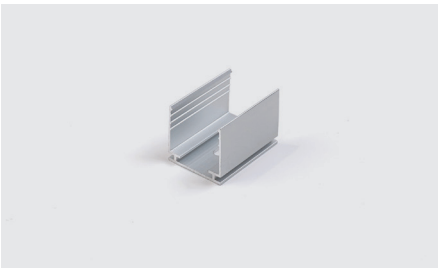
Accessories (Unit: mm)

Aluminium Profile



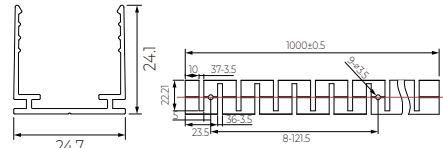
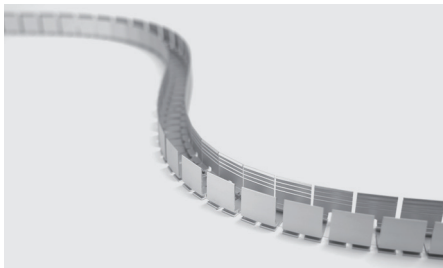
Length:
1000X24.7X24.1
Accessories:
Screw M3X16 (SUS304)

Aluminium Mounting clips



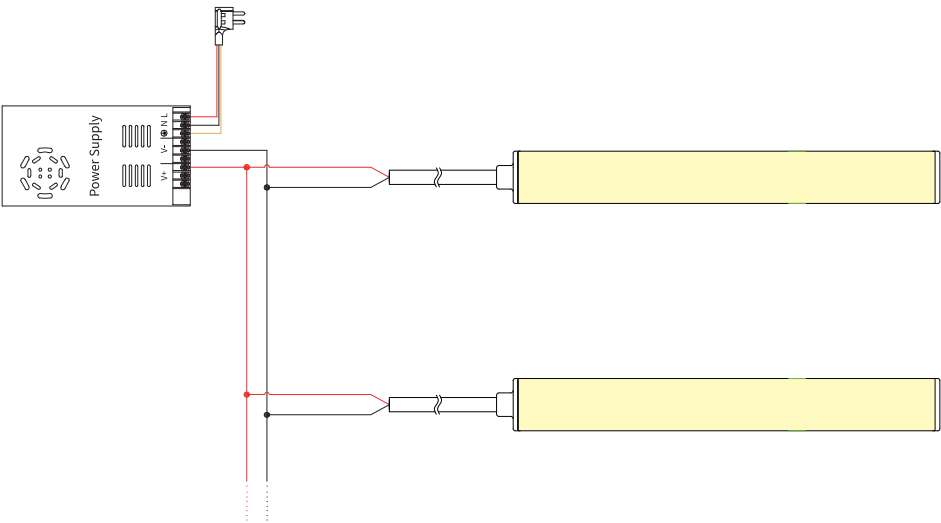
Length:
35X24.7X24.1
Accessories:
Screw M3X16 (SUS304)

Curved profile

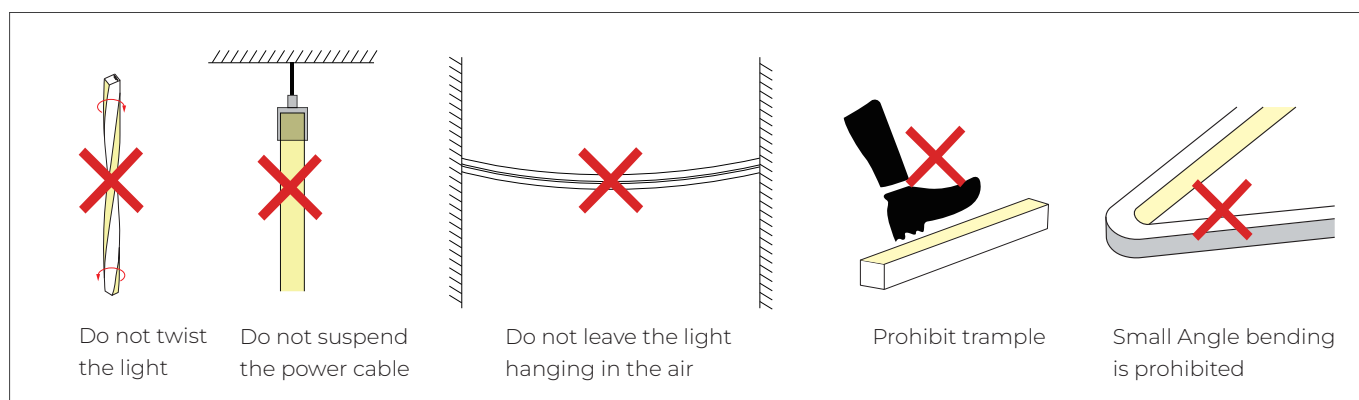
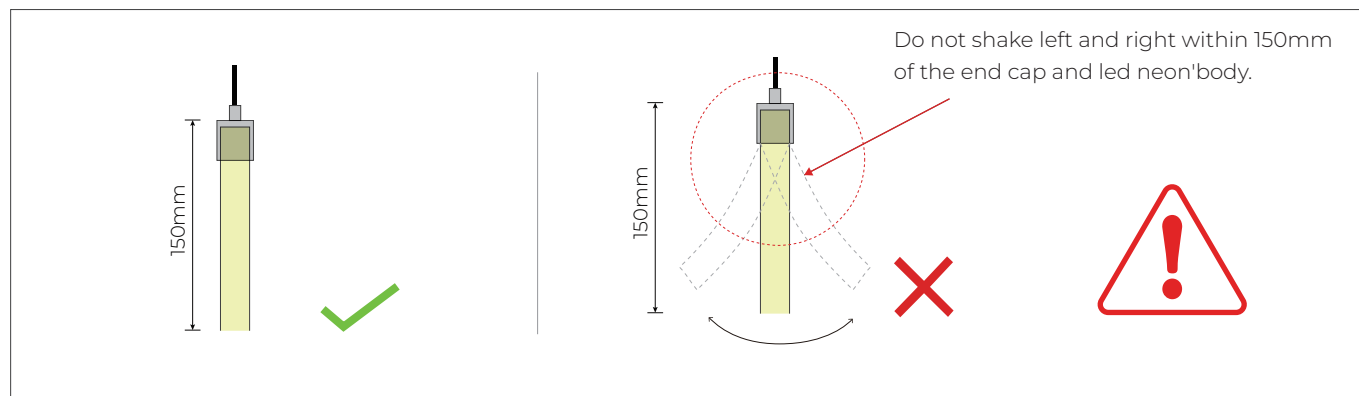


Length:
1000X24.7X24.1
Accessories:
Screw M3X16 (SUS304)

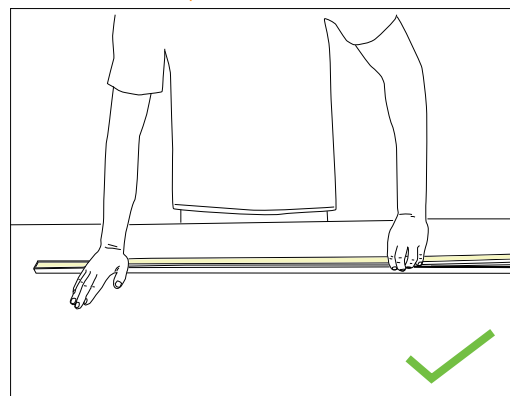
Single Color Connection Diagram



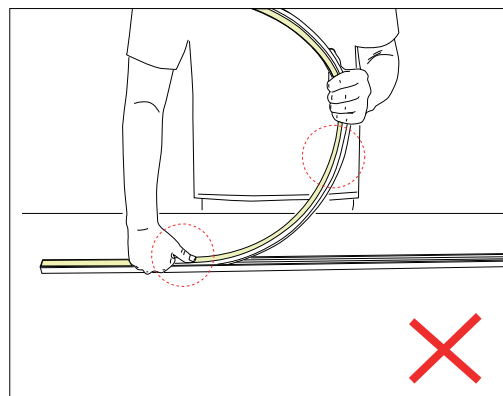
Installation Precautions



Put it in the profile



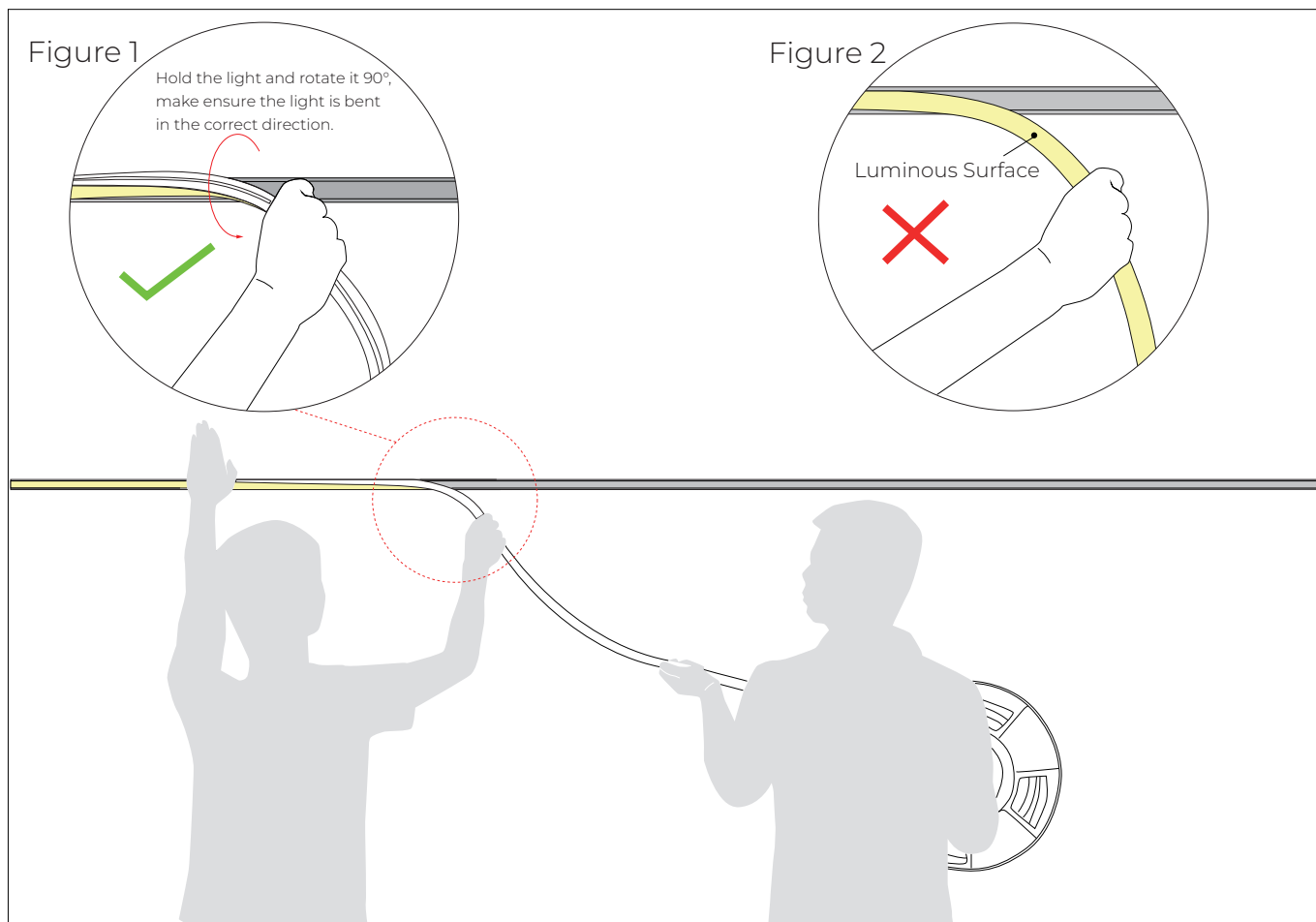
- Please press the LED strip with your palm to slowly insert the LED strip into the groove, and gently straighten the LED strip above the groove with your right hand.
Try to keep the LED strip in a flat state during the installation process.



- Do not press the LED strip with a single finger, it is easy to damage the internal parts of the LED strip.
The bent arc of the LED strip should not be too large during installation.

Installation Precautions -- Side Mounted

(If the length of the light is more than 2 meters, two persons must work together to install it.)



1.Installer:

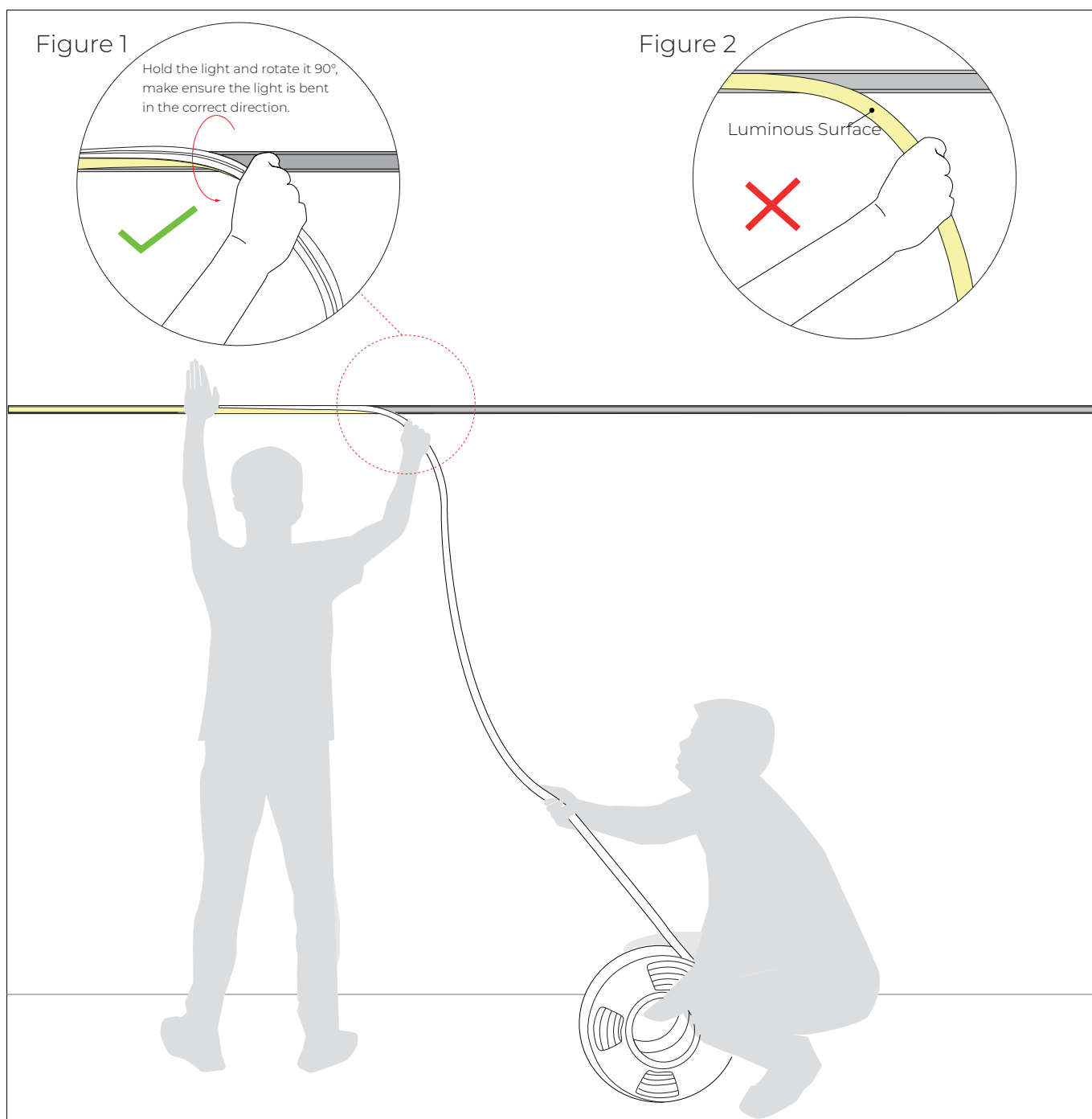
- Press the light with the palm of the left hand to slowly load it into the slot. Straighten the light with right hand, hold it and rotate it 90 ° to droop it in the direction of your hand. See Figure 1.
- Do not bend the luminous surface to the side. See Figure 2.

2.Assistant:

- Cooperate with the installer to lift the reel of the light, and then slowly deliver the light to installer. Do not pull or twist the light during the installation.

Installation Precautions -- Side Mounted

(If the length of the light is more than 5 meters, two persons must work together to install it.)



1.Installer:

-Press the light with the palm of the left hand to slowly load it into the slot. Straighten the light with right hand, hold it and rotate it 90 ° to droop it in the direction of your hand. See Figure 1.

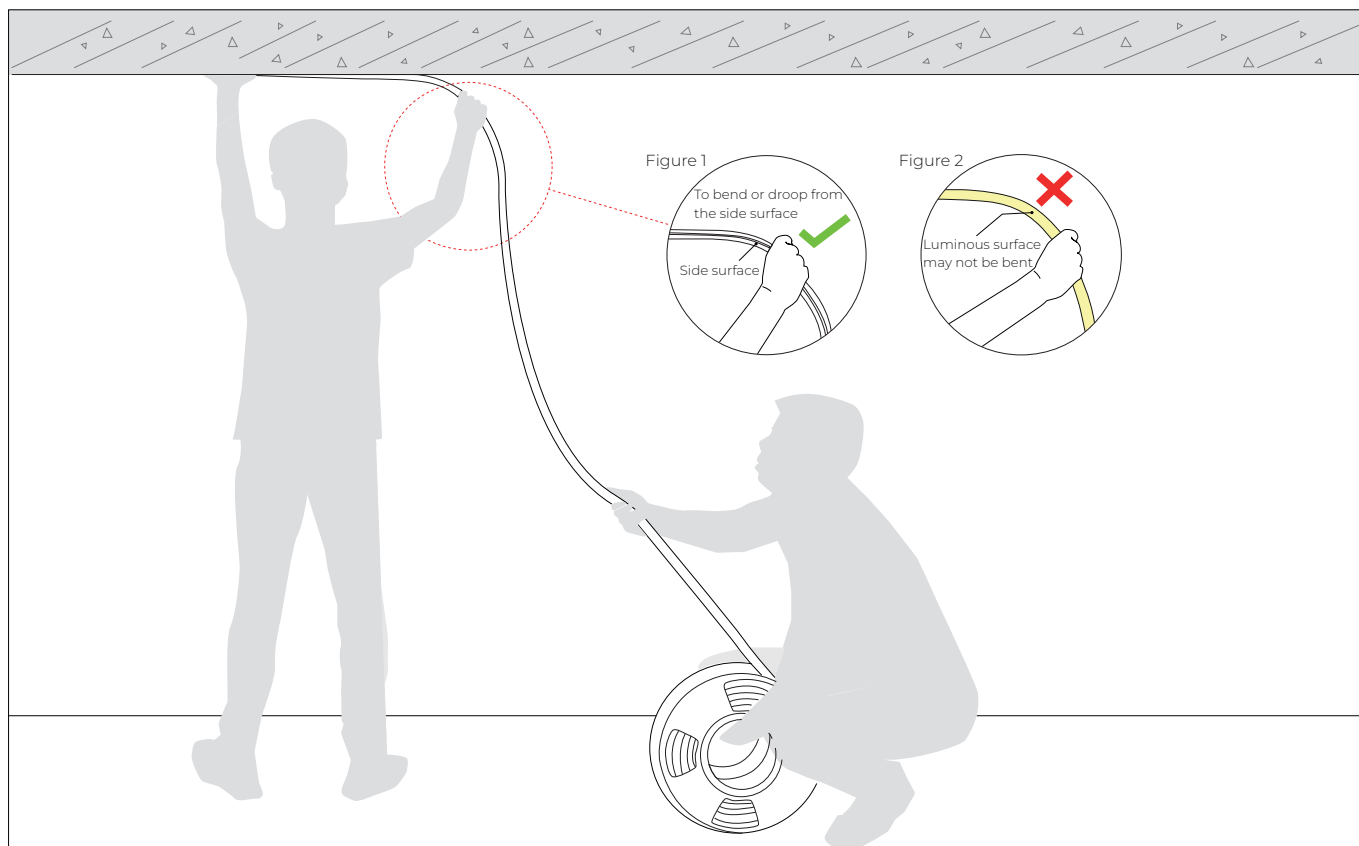
-Do not bend the luminous surface to the side. See Figure 2.

2.Assistant:

-Cooperate with the installer to slowly deliver the light to installer. Do not pull or twist the light during the installation.

Installation Precautions -- Top Mounted

(If the length of the light is more than 2 meters, two persons must work together to install it.)



1.Installer:

- Press the light with the palm of the left hand to slowly load it into the slot. Straighten the light with your right hand so that it droop naturally. See Figure 1.
- Luminous surface may not be bent. See Figure 2.

2.Assistant:

- Cooperate with the installer to slowly deliver the light to installer. Do not pull or twist the light during the installation.

Notes

The selection of the cable specification at the output end of the power supply, it depends on the total current of the load and the length of the cable. It is recommended to select according to the following table:

Current of the light	Specifications of the cable								
	L=1M	L=2M	L=4M	L=6M	L=8M	L=10M	L=12M	L=14M	L=16M
1A	AWG26	AWG23	AWG21	AWG18	AWG18	AWG17	AWG16	AWG15	AWG15
2A	AWG23	AWG21	AWG18	AWG16	AWG15	AWG14	AWG13	AWG12	AWG12
3A	AWG22	AWG18	AWG16	AWG14	AWG13	AWG12	AWG11	AWG11	AWG10
4A	AWG21	AWG18	AWG15	AWG13	AWG12	AWG11	AWG10	AWG9	AWG9
5A	AWG20	AWG17	AWG14	AWG12	AWG11	AWG10	AWG9	AWG9	AWG8
6A	AWG18	AWG16	AWG13	AWG11	AWG10	AWG9	AWG8	AWG8	AWG7
7A	AWG18	AWG15	AWG12	AWG11	AWG9	AWG8	AWG8	AWG7	AWG6
8A	AWG17	AWG15	AWG12	AWG10	AWG9	AWG8	AWG7	AWG7	AWG6
9A	AWG17	AWG14	AWG11	AWG10	AWG8	AWG7	AWG7	AWG6	AWG5
10A	AWG16	AWG14	AWG11	AWG9	AWG8	AWG7	AWG6	AWG6	AWG5

- ※The unused light should be sealed with the packaging bag to avoid prolonged exposure.
- ※Please use DC24V isolated constant voltage power supply with ripple voltage less than 5%. Using other types of power supply may damage the light or cause other safety risks.
- ※In practical application, 20% allowance should be reserved for power supply to ensure the stability of power supply.
- ※It is recommended that professionals connect the power supply. Do not connect the power supply with live power to avoid electric shock.
- ※Please confirm whether the voltage of the power supply is consistent with the voltage of the light; Pay attention to the positive and negative poles of the power cord, do not connect wrong, so as not to cause product damage;
- ※ When multiple power supplies are used, ensure that the positive poles of the power supply are not connected in parallel. Otherwise, the power supply system may be unstable or damaged after long-term operation.
- ※ If the actual application length exceeds the specified length, it will lead to overload, heating and uneven brightness of the light.
- ※ During installation, please do not scratch, twist, or bend the light irregularly. Otherwise, the light may be damaged beyond repair.
- ※ To ensure the life and reliability of the light, please do not over bend the light, which will damage the product itself.
- ※ To protect your eyes, please avoid staring at the glowing surface of the light for a long time.
- ※ Non-professionals are forbidden to install, disassemble and maintain the product.
- ※ Do not use any acid or alkaline adhesive to fix the light (including but not limited to glass glue, etc.)
- ※ IP67 products are not suitable for long-term immersion in water; IP68 products are only customized by the factory. After cutting and processing by users themselves, there is a risk that IP68 protection level cannot be reached
- ※ Because of the difference in structure, even if the same color temperature value, different sizes of light will look slightly different colors. Please confirm it before use.

Tests showed that methanol and benzenes will have yellowing effects on silicone.

In the newly decorated interior environment, epoxy floor paint, wall paint, wallpaper adhesive, various decoration materials or new furniture, they are likely to release of methanol and benzenes.

It is recommended to remove methanol and benzenes first, or ventilate for a period of time in the newly decorated interior environment before install the silicone neon light, to avoid affecting the silicone body.

BE A TRUSTED LED STRIP MANUFACTURER

Shenzhen GRILIGHT Technology Co.,Ltd

Tel: +8675527390189 Fax: +8675527397337
Web: www.grillite.com Contact: sale@grillight.com